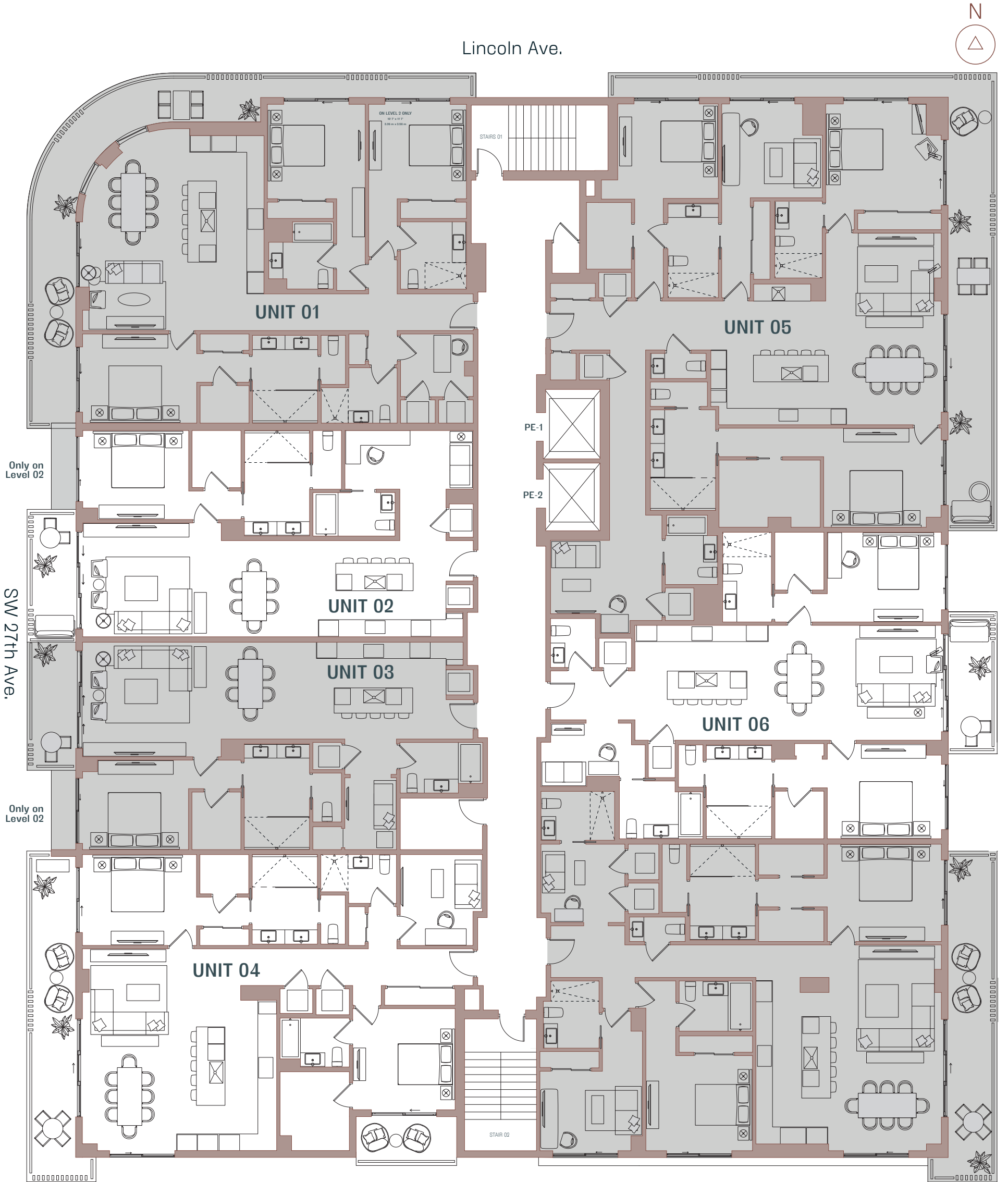


THE LINCOLN

COCONUT GROVE

Residences 2nd to 7th Level

UNIT 01		UNIT 02		UNIT 03		UNIT 04		UNIT 05		UNIT 06		UNIT 07	
3 Bedroom + Den 4 Bathroom		1 Bedroom + Den 2 Bathroom		1 Bedroom + Den 2 Bathroom		2 Bedroom + Den 3 Bathroom		4 Bedroom + Den 4 Bathroom Powder Room		2 Bedroom + Den 3 Bathroom Powder Room		3 Bedroom + Den 4 Bathroom Powder Room	
2nd Level	3rd to 7th Level	2nd Level	3rd to 7th Level	2nd Level	3rd to 7th Level	2nd Level	3rd to 7th Level	2nd Level	3rd to 7th Level	2nd Level	3rd to 7th Level	2nd Level	3rd to 7th Level
Interior 1,875 SF. / 174 m ²	Interior 1,884 SF. / 175 m ²	Interior 1,281 SF. / 119 m ²	Interior 1,281 SF. / 119 m ²	Interior 1,227 SF. / 113 m ²	Interior 1,227 SF. / 114 m ²	Interior 1,780 SF. / 163 m ²	Interior 2,811 SF. / 242 m ²	Interior 1,591 SF. / 148 m ²	Interior 2,026 SF. / 188 m ²	Interior 436 SF. / 41 m ²	Interior 436 SF. / 41 m ²	Interior 2,311 SF. / 215 m ²	Interior 2,320 SF. / 216 m ²
Exterior 436 SF. / 41 m ²	Exterior 436 SF. / 41 m ²	Exterior 126 SF. / 12 m ²	Exterior 96 SF. / 9 m ²	Exterior 126 SF. / 12 m ²	Exterior 96 SF. / 9 m ²	Exterior 323 SF. / 30 m ²	Exterior 482 SF. / 43 m ²	Exterior 106 SF. / 9 m ²	Exterior 251 SF. / 23 m ²	Exterior 126 SF. / 12 m ²	Exterior 96 SF. / 9 m ²	Exterior 1,353 SF. / 126 m ²	Exterior 1,323 SF. / 123 m ²
Total 2,311 SF. / 215 m ²	Total 2,320 SF. / 216 m ²	Total 1,407 SF. / 131 m ²	Total 1,377 SF. / 128 m ²	Total 1,353 SF. / 126 m ²	Total 1,323 SF. / 123 m ²	Total 2,083 SF. / 194 m ²	Total 3,073 SF. / 285 m ²	Total 1,696 SF. / 157 m ²	Total 2,277 SF. / 211 m ²				



Coconut Grove Marina

Developed by



Partners



These materials are not intended to be an offer to sell, or solicitation to buy a unit in the condominium. Such an offering shall only be made pursuant to the prospectus (offering circular) for the condominium and no statements should be relied upon unless made in the prospectus or in the applicable purchase agreement. In no event shall any solicitation, offer or sale of a unit in the condominium be made in, or to residents of, any state or country in which such activity would be unlawful. The purchase of real estate is a significant decision. Developer makes no representations concerning any potential for future profit, any future appreciation in value, any income potential, tax advantages, depreciation or investment potential regarding acquiring a unit, nor any monetary or financial advantages related to same. No statements or representations are made regarding economic or tax benefits to be derived, if any, by buyer from acquiring and/or owning a unit. This project is being developed by 3151 SW 27 Ave PropCo LLC, a Florida limited liability company ("developer"), which was formed solely for such purpose. MDLV, LLC, "One Sotheby's" is affiliated with this entity, but is not the developer of this project. Purchasers shall look solely to developer (and not to One Sotheby's and/or any of its affiliates other than developer) with respect to any and all matters relating to the marketing and/or development of the condominium and with respect to the sales of units in the condominium. All images and designs depicted herein are artist's conceptual renderings, which are based upon preliminary development plans, and are subject to change without notice in the manner provided in the offering documents. All such materials are not to scale and are shown solely for illustrative purposes. Certain services and/or amenities described herein may be part of, or offered from, a privately owned commercial component of the project. Access may be limited, and additional fees may apply for certain services. Square footages stated herein are measured to the exterior boundaries of the exterior walls and the centerline of interior demising walls and in fact vary from the dimensions that would be determined by using the description and definition of the "Unit" set forth in the Declaration (which generally only includes the interior airspace between the perimeter walls and excludes interior structural components).

Creative by Metrostudio.com