

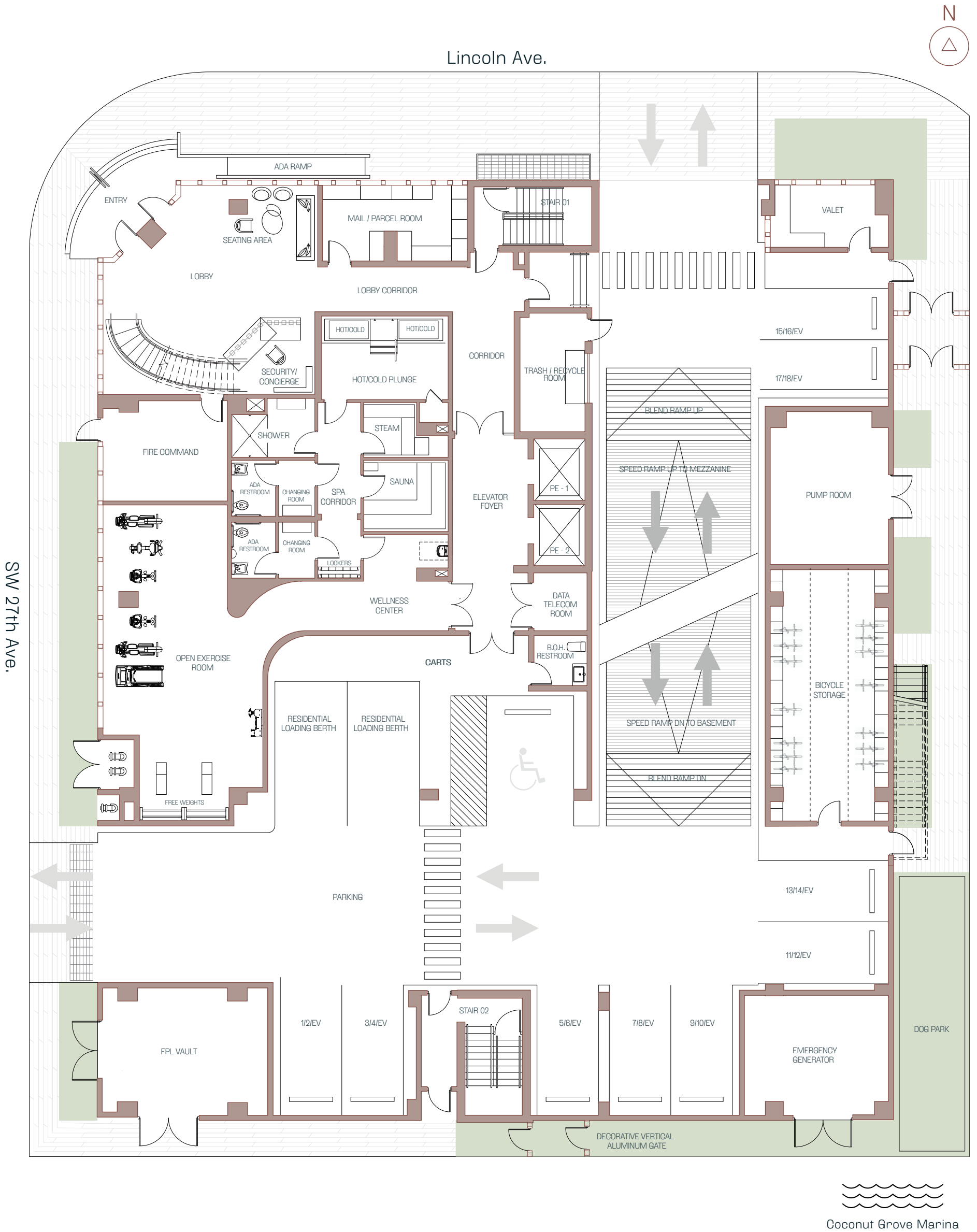
THE
LINCOLN
COCONUT GROVE

KEY PLANS

THE LINCOLN

COCONUT GROVE

Ground Level



Developed by



Partners



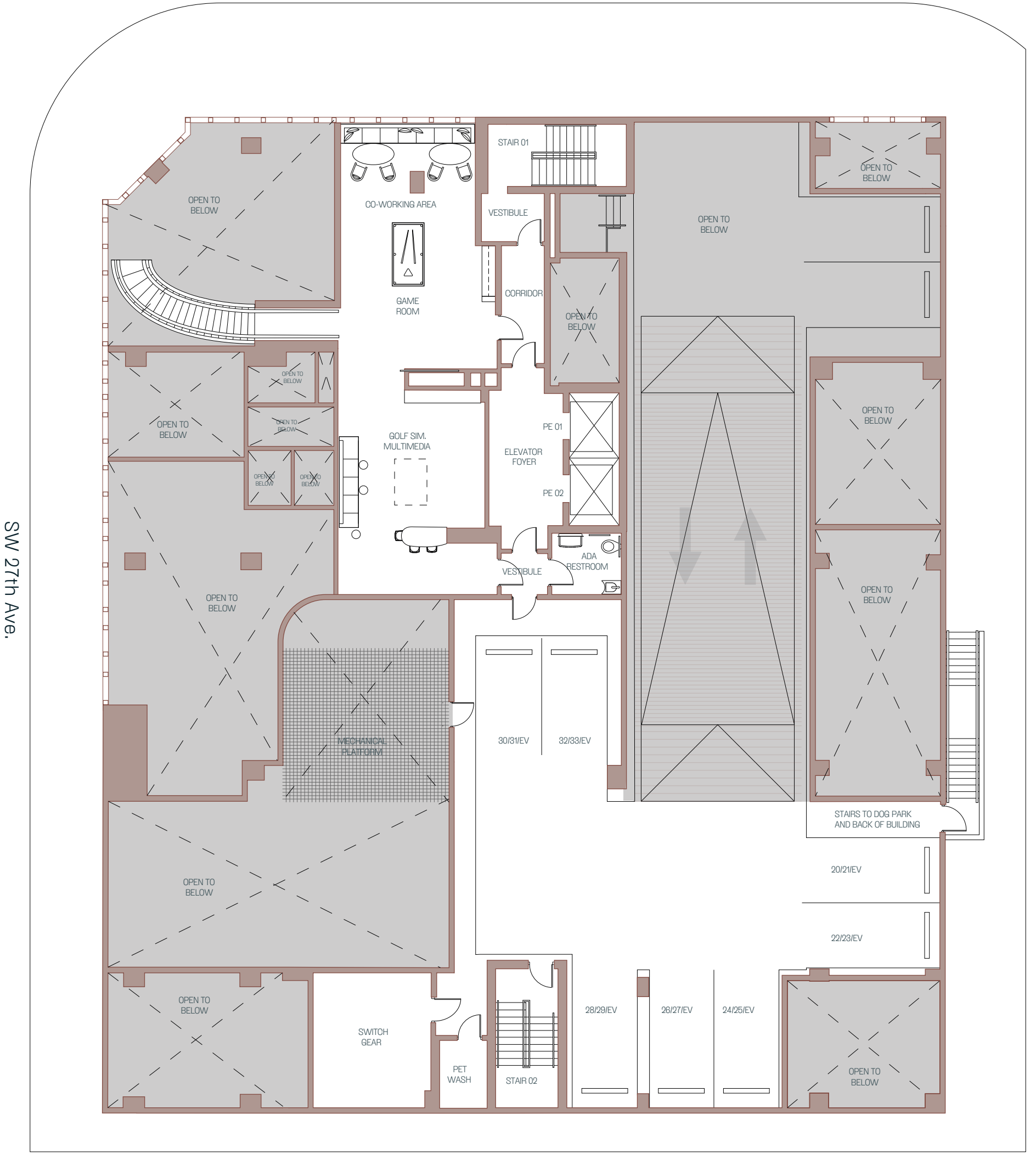
These materials are not intended to be an offer to sell, or solicitation to buy a unit in the condominium. Such an offering shall only be made pursuant to the prospectus (offering circular) for the condominium and no statements should be relied upon unless made in the prospectus or in the applicable purchase agreement. In no event shall any solicitation, offer or sale of a unit in the condominium be made in, or to residents of, any state or country in which such activity would be unlawful. The purchase of real estate is a significant decision. Developer makes no representations concerning any potential for future profit, any future appreciation in value, any income potential, tax advantages, depreciation or investment potential regarding acquiring a unit, nor any monetary or financial advantages related to same. No statements or representations are made regarding the economic or tax benefits to be derived, if any, by buyer from acquiring and/or owning a unit. This project is being developed by 3151 SW 27th Ave PropCo LLC, a Florida limited liability company ("developer"), which was formed solely for such purpose. MDLV, LLC. "One Sotheby's" is affiliated with this entity, but is not the developer of this project. Purchasers shall look solely to developer (and not to One Sotheby's and/or any of its affiliates other than developer) with respect to any and all matters relating to the marketing and/or development of the condominium and with respect to the sales of units in the condominium. All images and designs depicted herein are artist's conceptual renderings, which are based upon preliminary development plans, and are subject to change without notice in the manner provided in the offering documents. All such materials are not to scale and are shown solely for illustrative purposes. Certain services and/or amenities described herein may be part of, or offered from, a privately owned commercial component of the project. Access may be limited, and additional fees may apply for certain services. Square footages stated herein are measured to the exterior boundaries of the exterior walls and the centerline of interior demising walls and in fact vary from the dimensions that would be determined by using the description and definition of the "Unit" set forth in the Declaration (which generally only includes the interior airspace between the perimeter walls and excludes interior structural components).

THE LINCOLN

COCONUT GROVE

Mezzanine Level

Lincoln Ave.



Coconut Grove Marina

Developed by



Partners



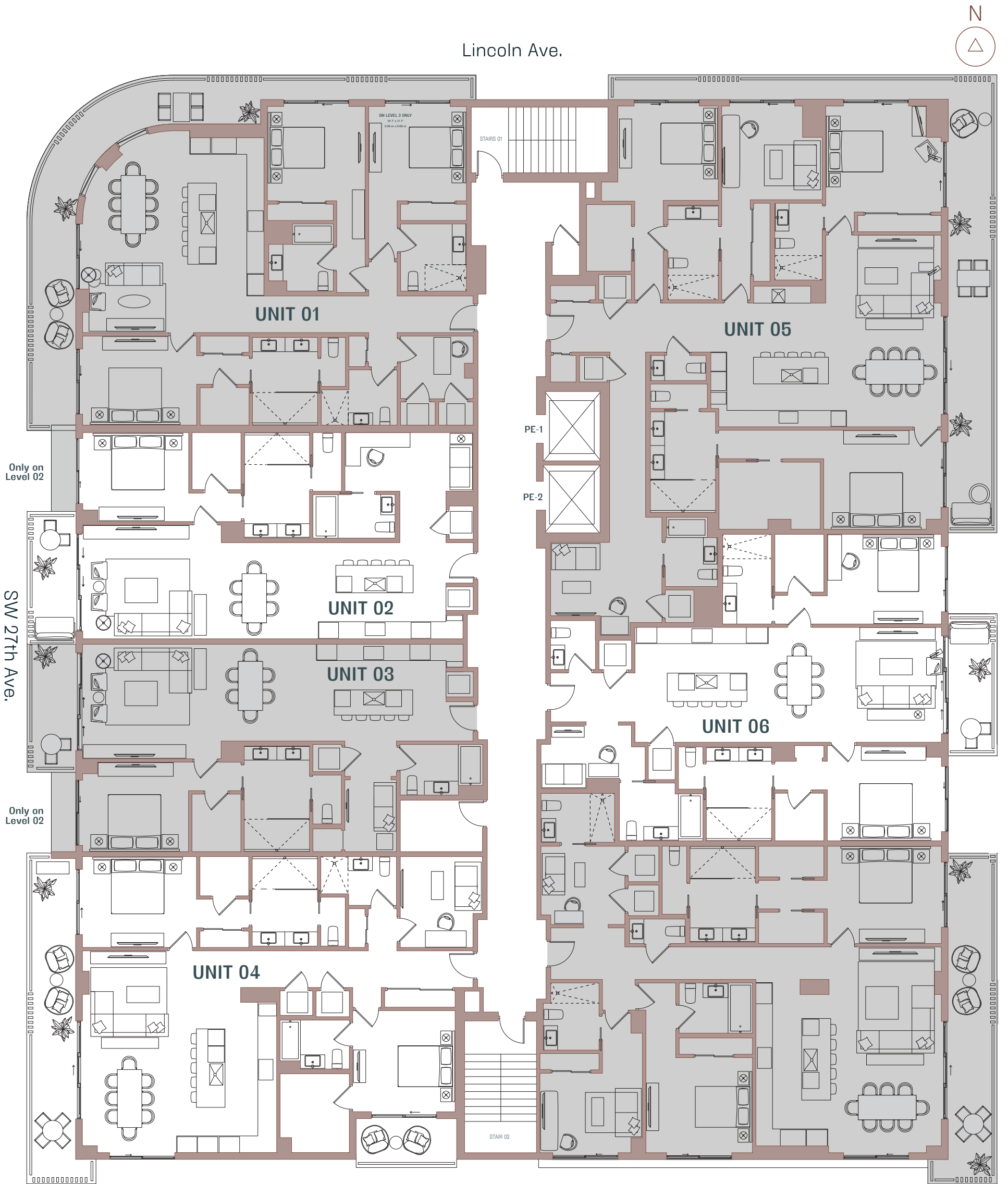
These materials are not intended to be an offer to sell, or solicitation to buy a unit in the condominium. Such an offering shall only be made pursuant to the prospectus (offering circular) for the condominium and no statements should be relied upon unless made in the prospectus or in the applicable purchase agreement. In no event shall any solicitation, offer or sale of a unit in the condominium be made in, or to residents of, any state or country in which such activity would be unlawful. The purchase of real estate is a significant decision. Developer makes no representations concerning any potential for future profit, any future appreciation in value, any income potential, tax advantages, depreciation or investment potential regarding acquiring a unit, nor any monetary or financial advantages related to same. No statements or representations are made regarding the economic or tax benefits to be derived, if any, by buyer from acquiring and/or owning a unit. This project is being developed by 3151 SW 27th Ave PropCo LLC, a Florida limited liability company ("developer"), which was formed solely for such purpose. MDLV, LLC. "One Sotheby's" is affiliated with this entity, but is not the developer of this project. Purchasers shall look solely to developer (and not to One Sotheby's and/or any of its affiliates other than developer) with respect to any and all matters relating to the marketing and/or development of the condominium and with respect to the sales of units in the condominium. All images and designs depicted herein are artist's conceptual renderings, which are based upon preliminary development plans, and are subject to change without notice in the manner provided in the offering documents. All such materials are not to scale and are shown solely for illustrative purposes. Certain services and/or amenities described herein may be part of, or offered from, a privately owned commercial component of the project. Access may be limited, and additional fees may apply for certain services. Square footages stated herein are measured to the exterior boundaries of the exterior walls and the centerline of interior demising walls and in fact vary from the dimensions that would be determined by using the description and definition of the "Unit" set forth in the Declaration (which generally only includes the interior airspace between the perimeter walls and excludes interior structural components).

THE LINCOLN

COCONUT GROVE

Residences 2nd to 7th Level

UNIT 01		UNIT 02		UNIT 03		UNIT 04		UNIT 05		UNIT 06		UNIT 07	
3 Bedroom + Den 4 Bathroom		1 Bedroom + Den 2 Bathroom		1 Bedroom + Den 2 Bathroom		2 Bedroom + Den 3 Bathroom		4 Bedroom + Den 4 Bathroom Powder Room		2 Bedroom + Den 3 Bathroom Powder Room		3 Bedroom + Den 4 Bathroom Powder Room	
2nd Level	3rd to 7th Level	2nd Level	3rd to 7th Level	2nd Level	3rd to 7th Level	2nd Level	3rd to 7th Level	2nd Level	3rd to 7th Level	2nd Level	3rd to 7th Level	2nd Level	3rd to 7th Level
Interior 1,875 SF. / 174 m ²	Interior 1,884 SF. / 175 m ²	Interior 1,281 SF. / 119 m ²	Interior 1,281 SF. / 119 m ²	Interior 1,227 SF. / 113 m ²	Interior 1,227 SF. / 114 m ²	Interior 1,780 SF. / 163 m ²	Interior 2,811 SF. / 242 m ²	Interior 1,591 SF. / 148 m ²	Interior 2,026 SF. / 188 m ²	Interior 436 SF. / 41 m ²	Interior 436 SF. / 41 m ²	Interior 2,311 SF. / 215 m ²	Interior 2,320 SF. / 216 m ²
Exterior 436 SF. / 41 m ²	Exterior 436 SF. / 41 m ²	Exterior 126 SF. / 12 m ²	Exterior 96 SF. / 9 m ²	Exterior 126 SF. / 12 m ²	Exterior 96 SF. / 9 m ²	Exterior 323 SF. / 30 m ²	Exterior 482 SF. / 43 m ²	Exterior 106 SF. / 9 m ²	Exterior 251 SF. / 23 m ²	Exterior 126 SF. / 12 m ²	Exterior 96 SF. / 9 m ²	Exterior 1,353 SF. / 126 m ²	Exterior 1,323 SF. / 123 m ²
Total 2,311 SF. / 215 m ²	Total 2,320 SF. / 216 m ²	Total 1,407 SF. / 131 m ²	Total 1,377 SF. / 128 m ²	Total 1,353 SF. / 126 m ²	Total 1,323 SF. / 123 m ²	Total 2,083 SF. / 194 m ²	Total 3,073 SF. / 285 m ²	Total 1,696 SF. / 157 m ²	Total 2,277 SF. / 211 m ²	Total 1,407 SF. / 131 m ²	Total 1,377 SF. / 128 m ²	Total 2,311 SF. / 215 m ²	Total 2,320 SF. / 216 m ²



Coconut Grove Marina

Developed by



Partners



These materials are not intended to be an offer to sell, or solicitation to buy a unit in the condominium. Such an offering shall only be made pursuant to the prospectus (offering circular) for the condominium and no statements should be relied upon unless made in the prospectus or in the applicable purchase agreement. In no event shall any solicitation, offer or sale of a unit in the condominium be made in, or to residents of, any state or country in which such activity would be unlawful. The purchase of real estate is a significant decision. Developer makes no representations concerning any potential for future profit, any future appreciation in value, any income potential, tax advantages, depreciation or investment potential regarding acquiring a unit, nor any monetary or financial advantages related to same. No statements or representations are made regarding the economic or tax benefits to be derived, if any, by buyer from acquiring and/or owning a unit. This project is being developed by 3151 SW 27 Ave PropCo LLC, a Florida limited liability company ("developer"), which was formed solely for such purpose. MDLV, LLC, "One Sotheby's" is affiliated with this entity, but is not the developer of this project. Purchasers shall look solely to developer (and not to One Sotheby's and/or any of its affiliates other than developer) with respect to any and all matters relating to the marketing and/or development of the condominium and with respect to the sales of units in the condominium. All images and designs depicted herein are artist's conceptual renderings, which are based upon preliminary development plans, and are subject to change without notice in the manner provided in the offering documents. All such materials are not to scale and are shown solely for illustrative purposes. Certain services and/or amenities described herein may be part of, or offered from, a privately owned commercial component of the project. Access may be limited, and additional fees may apply for certain services. Square footages stated herein are measured to the exterior boundaries of the exterior walls and the centerline of interior demising walls and in fact vary from the dimensions that would be determined by using the description and definition of the "Unit" set forth in the Declaration (which generally only includes the interior airspace between the perimeter walls and excludes interior structural components).

Creative by Metrostudio.com

THE LINCOLN

COCONUT GROVE

Penthouses Lower Level

01 NW

4 Bedroom + Den
4 Bathroom
Powder Room

Interior	Exterior
Lower level: 1,741 SF. / 162 m ²	Lower level: 560 SF. / 52 m ²
Upper level: 1,242 SF. / 115 m ²	Upper level: 90 SF. / 8 m ²
Total Dimensions:	
Interior: 2,983 SF. / 277 m ²	
Exterior: 650 SF. / 60 m ²	

02 WEST

3 Bedroom + Den
4 Bathroom
Powder Room

Interior	Exterior
2,461 SF. / 229 m ²	345 SF. / 32 m ²
Total Dimensions:	
2,806 SF. / 261 m ²	

03 SW

4 Bedroom + Den
4 Bathroom
Powder Room

Interior	Exterior
Lower level: 1,624 SF. / 151 m ²	Lower level: 478 SF. / 44 m ²
Upper level: 1,218 SF. / 113 m ²	Upper level: 85 SF. / 8 m ²
Total Dimensions:	
Interior: 2,842 SF. / 264 m ²	
Exterior: 563 SF. / 52 m ²	

04 NE

4 Bedroom + Den
3 Bathroom
Powder Room

Interior	Exterior
Lower level: 1,595 SF. / 148 m ²	Lower level: 612 SF. / 57 m ²
Upper level: 1,136 SF. / 106 m ²	Upper level: 136 SF. / 12 m ²
Total Dimensions:	
Interior: 2,731 SF. / 254 m ²	
Exterior: 748 SF. / 69 m ²	

05 EAST

3 Bedroom + Den
3 Bathroom
Powder Room

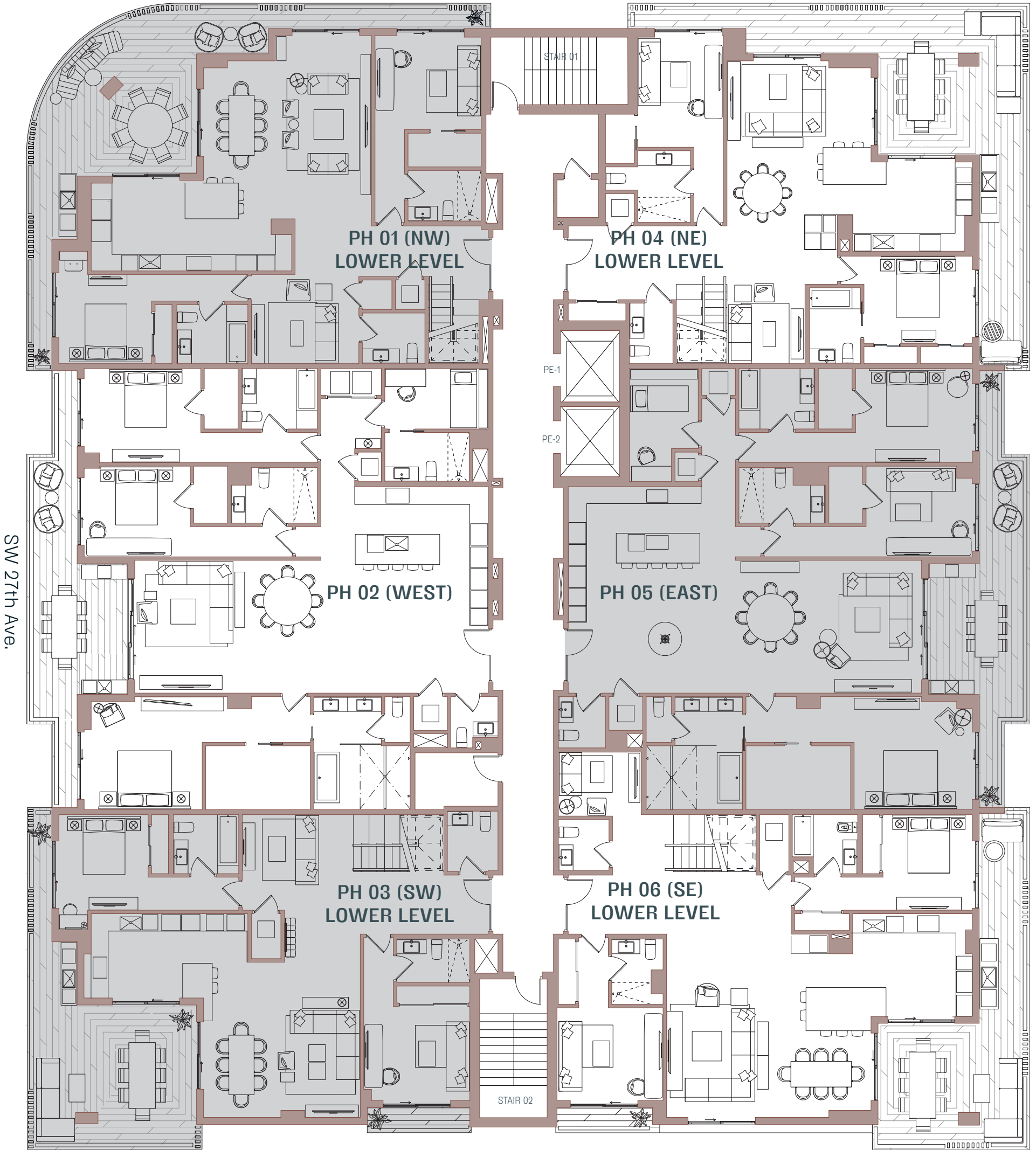
Interior	Exterior
2,368 SF. / 220 m ²	345 SF. / 32 m ²
Total Dimensions:	
2,713 SF. / 252 m ²	

06 SE

4 Bedroom + Den
4 Bathroom
Powder Room

Interior	Exterior
Lower level: 1,786 SF. / 166 m ²	Lower level: 459 SF. / 43 m ²
Upper level: 1,179 SF. / 110 m ²	Upper level: 128 SF. / 12 m ²
Total Dimensions:	
Interior: 2,965 SF. / 276 m ²	
Exterior: 587 SF. / 55 m ²	

Lincoln Ave.



Coconut Grove Marina

Developed by



Partners



These materials are not intended to be an offer to sell, or solicitation to buy a unit in the condominium. Such an offering shall only be made pursuant to the prospectus (offering circular) for the condominium and no statements should be relied upon unless made in the prospectus or in the applicable purchase agreement. In no event shall any solicitation, offer or sale of a unit in the condominium be made in, or to residents of, any state or country in which such activity would be unlawful. The purchase of real estate is a significant decision. Developer makes no representations concerning any potential for future profit, any future appreciation in value, any income potential, tax advantages, depreciation or investment potential regarding acquiring a unit, nor any monetary or financial advantages related to same. No statements or representations are made regarding the economic or tax benefits to be derived, if any, by buyer from acquiring and/or owning a unit. This project is being developed by 3151 SW 27th Ave PropCo LLC, a Florida limited liability company ("developer"), which was formed solely for such purpose. MDLV, LLC. "One Sotheby's" is affiliated with this entity, but is not the developer of this project. Purchasers shall look solely to developer (and not to One Sotheby's and/or any of its affiliates other than developer) with respect to any and all matters relating to the marketing and/or development of the condominium and with respect to the sales of units in the condominium. All images and designs depicted herein are artist's conceptual renderings, which are based upon preliminary development plans, and are subject to change without notice in the manner provided in the offering documents. All such materials are not to scale and are shown solely for illustrative purposes. Certain services and/or amenities described herein may be part of, or offered from, a privately owned commercial component of the project. Access may be limited, and additional fees may apply for certain services. Square footages stated herein are measured to the exterior boundaries of the exterior walls and the centerline of interior demising walls and in fact vary from the dimensions that would be determined by using the description and definition of the "Unit" set forth in the Declaration (which generally only includes the interior airspace between the perimeter walls and excludes interior structural components).

Creative by Metrostudio.com

THE LINCOLN

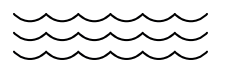
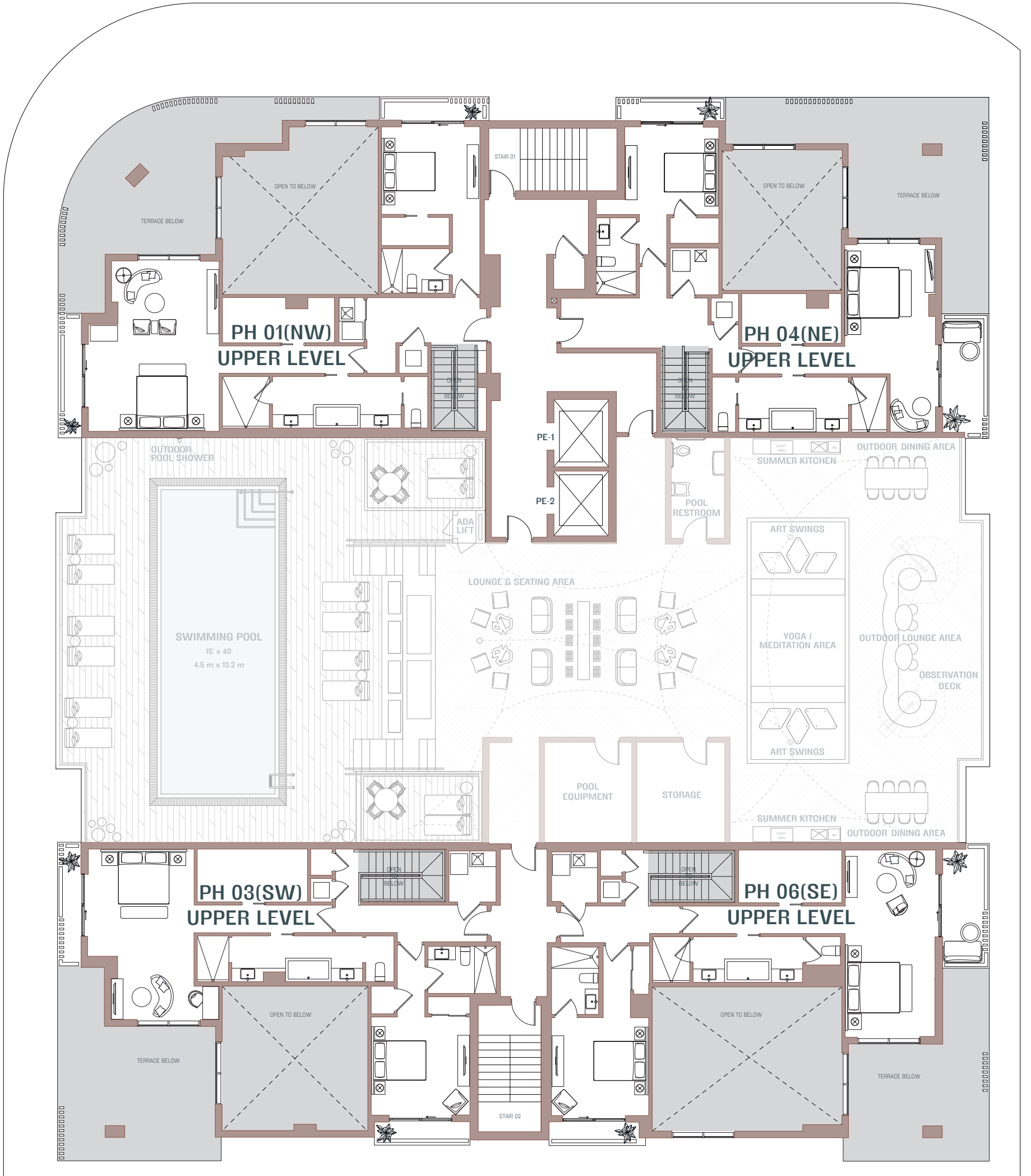
COCONUT GROVE

Penthouses Upper Level

Lincoln Ave.



SW 27th Ave.



Coconut Grove Marina

Developed by



Partners



These materials are not intended to be an offer to sell, or solicitation to buy a unit in the condominium. Such an offering shall only be made pursuant to the prospectus (offering circular) for the condominium and no statements should be relied upon unless made in the prospectus or in the applicable purchase agreement. In no event shall any solicitation, offer or sale of a unit in the condominium be made in, or to residents of, any state or country in which such activity would be unlawful. The purchase of real estate is a significant decision. Developer makes no representations concerning any potential for future profit, any future appreciation in value, any income potential, tax advantages, depreciation or investment potential regarding acquiring a unit, nor any monetary or financial advantages related to same. No statements or representations are made regarding the economic or tax benefits to be derived, if any, by buyer from acquiring and/or owning a unit. This project is being developed by 3151 SW 27th Ave PropCo LLC, a Florida limited liability company ("developer"), which was formed solely for such purpose. MDLV, LLC. "One Sotheby's" is affiliated with this entity, but is not the developer of this project. Purchasers shall look solely to developer (and not to One Sotheby's and/or any of its affiliates other than developer) with respect to any and all matters relating to the marketing and/or development of the condominium and with respect to the sales of units in the condominium. All images and designs depicted herein are artist's conceptual renderings, which are based upon preliminary development plans, and are subject to change without notice in the manner provided in the offering documents. All such materials are not to scale and are shown solely for illustrative purposes. Certain services and/or amenities described herein may be part of, or offered from, a privately owned commercial component of the project. Access may be limited, and additional fees may apply for certain services. Square footages stated herein are measured to the exterior boundaries of the exterior walls and the centerline of interior demising walls and in fact vary from the dimensions that would be determined by using the description and definition of the "Unit" set forth in the Declaration (which generally only includes the interior airspace between the perimeter walls and excludes interior structural components).

THE LINCOLN

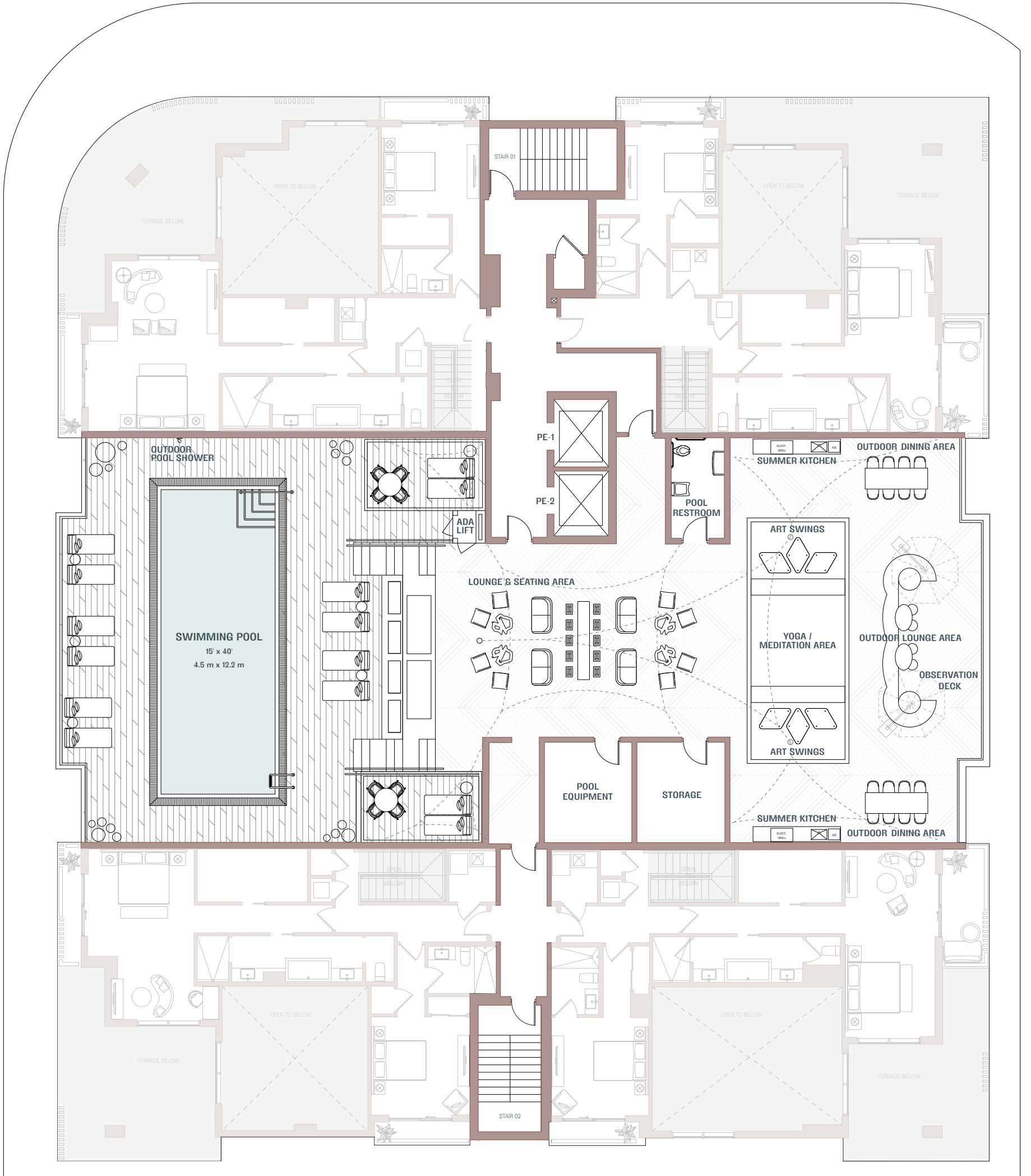
COCONUT GROVE

Pool Deck Level

Lincoln Ave.



SW 27th Ave.



Coconut Grove Marina

Developed by



Partners



These materials are not intended to be an offer to sell, or solicitation to buy a unit in the condominium. Such an offering shall only be made pursuant to the prospectus (offering circular) for the condominium and no statements should be relied upon unless made in the prospectus or in the applicable purchase agreement. In no event shall any solicitation, offer or sale of a unit in the condominium be made in, or to residents of, any state or country in which such activity would be unlawful. The purchase of real estate is a significant decision. Developer makes no representations concerning any potential for future profit, any future appreciation in value, any income potential, tax advantages, depreciation or investment potential regarding acquiring a unit, nor any monetary or financial advantages related to same. No statements or representations are made regarding the economic or tax benefits to be derived, if any, by buyer from acquiring and/or owning a unit. This project is being developed by 3151 SW 27th Ave PropCo LLC, a Florida limited liability company ("developer"), which was formed solely for such purpose. MDLV, LLC. "One Sotheby's" is affiliated with this entity, but is not the developer of this project. Purchasers shall look solely to developer (and not to One Sotheby's and/or any of its affiliates other than developer) with respect to any and all matters relating to the marketing and/or development of the condominium and with respect to the sales of units in the condominium. All images and designs depicted herein are artist's conceptual renderings, which are based upon preliminary development plans, and are subject to change without notice in the manner provided in the offering documents. All such materials are not to scale and are shown solely for illustrative purposes. Certain services and/or amenities described herein may be part of, or offered from, a privately owned commercial component of the project. Access may be limited, and additional fees may apply for certain services. Square footages stated herein are measured to the exterior boundaries of the exterior walls and the centerline of interior demising walls and in fact vary from the dimensions that would be determined by using the description and definition of the "Unit" set forth in the Declaration (which generally only includes the interior airspace between the perimeter walls and excludes interior structural components).