

Residence 02

THE RESIDENCES

SIX FISHER ISLAND

⑥



ARTIST'S CONCEPTUAL RENDERING; SURROUNDING BUILDINGS AND LANDMARKS MODIFIED OR OMITTED

N 25° 45.8255



W 80° 8.4428

Unique Residence 02 Features

- Gracious residence with panoramic views from the Atlantic Ocean, Miami Beach and Biscayne Bay to the Links at Fisher Island and Miami skyline
- Private terraces over 15 feet deep from living area and primary suite
- Expansive living, dining, and entertaining area accented with linear cove lighting
- Custom Tara Bernerd & Partners-designed kitchen outfitted with Sub-Zero and Wolf appliance suite, and finished pantry
- Service areas include laundry room and service suite with full bathroom
- Luxurious primary suite features panoramic bay views, wide panel sliding doors providing seamless access from sitting area to an expansive balcony, plus custom walk-in-closets and midnight bar
- Bathrooms and custom closet suites in both primary and secondary bedrooms designed by Tara Bernerd & Partners
- Primary bathroom features natural stone flooring and walls, custom bathtub as well as dual water closets, rain head steam showers, and vanity complete with bespoke mirrors and light fixtures
- Direct elevator entry to private foyer

RESIDENCE 02

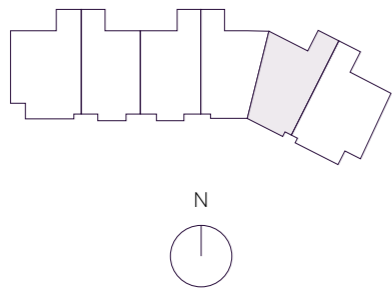
INTERIOR	EXTERIOR
3,976 F ²	763 F ²
370 M ²	71 M ²

TOTAL
4,739 F²
441 M²

*

- 3 BEDROOMS
- 4 BATHROOMS
- POWDER ROOM
- FAMILY ROOM
- SERVICE SUITE
- LIVING ROOM

OCEAN VIEW



THE RESIDENCES

SIX FISHER ISLAND

⑥

The dimensions stated for this unit floor plan are approximate because there are various recognized methods for calculating the square footage of a unit. The square footage stated here is calculated from the exterior boundaries of the exterior walls to the centerline of interior demising walls without deductions for cutouts, curves, or architectural features. This method typically results in quoted dimensions greater than the dimensions that would be determined by using other accepted methods. The definition of "Unit" and the calculation method to be relied upon is set forth by the Developer in Developer's prospectus and the method set forth in the Developer's prospectus may result in a square footage calculation less than the method used here. Consult the Developer's prospectus to learn Unit dimensions and what is offered with the Unit. Dimensions and unit configuration is not guaranteed and may change during construction. Depictions of furnishings, fixtures and other items of personal property are not included with purchase.

- FAMILY ROOM
18'-8" x 20'
- BALCONY
16'-6" x 43'-3"
- PRIMARY BEDROOM
14'-1" x 23'-6"
- KITCHEN
21'-6" x 11'-6"
- LIVING ROOM
30'-7" x 14'-6"
- HER WARDROBE
9' x 13'-8"
- HIS WARDROBE
9'-11" x 13'-4"
- PRIMARY BATHROOM
15'-4" x 17'-3"
- BEDROOM 2
13' x 14'-8"
- BEDROOM 3
13'-6" x 14'-5"
- BALCONY
33'-3" x 8'-1"



N 25° 45.8255



W 80° 8.4428

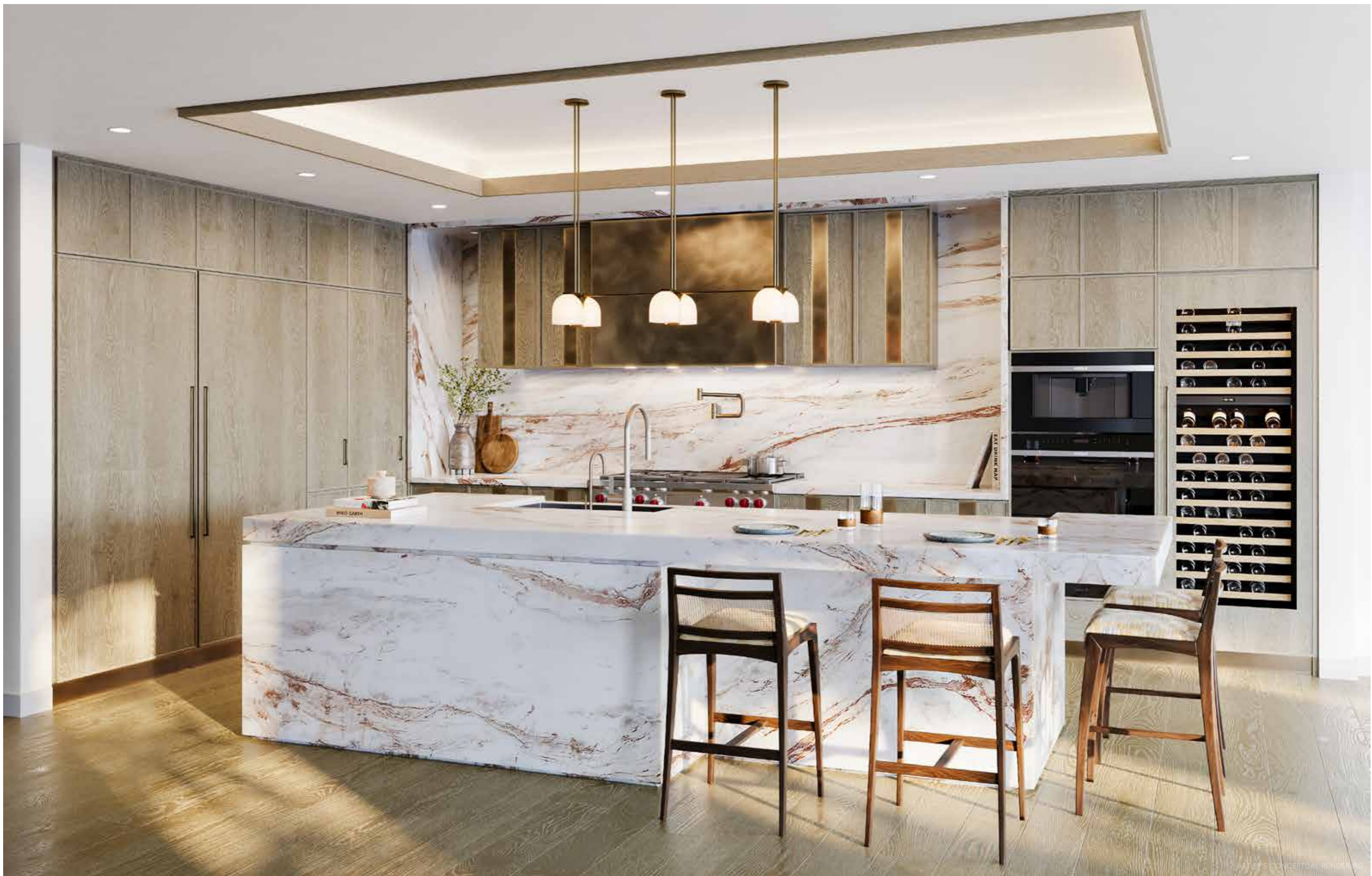


ARTIST'S CONCEPTUAL RENDERING

N 25° 45.8255



W 80° 8.4428



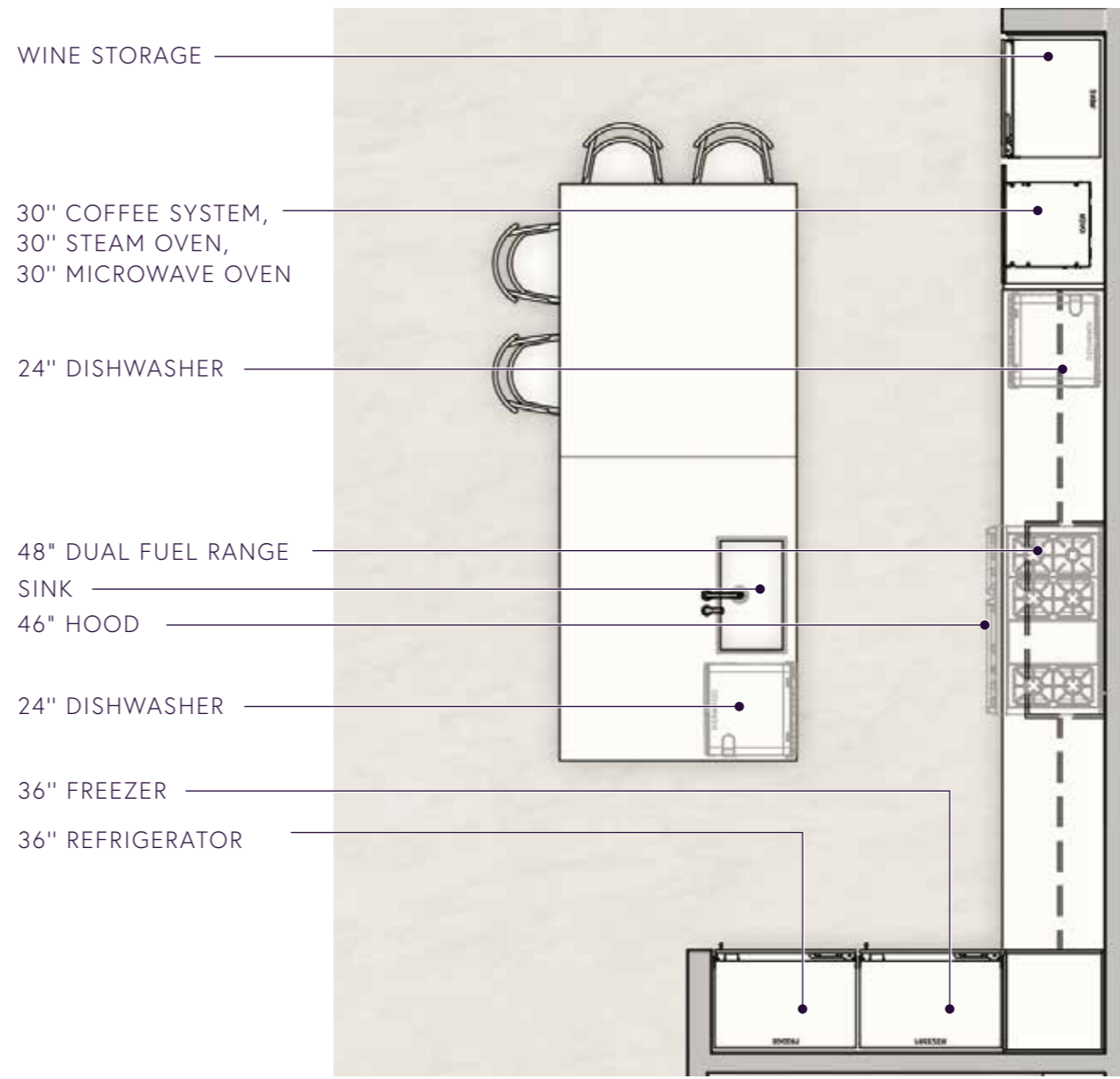
N 25° 45.8255



W 80° 8.4428

Kitchen Layout

EQUIPMENT LIST	QTY
48" DUAL FUEL RANGE	1
46" HOOD	1
36" REFRIGERATOR	1
36" FREEZER	1
15" ICE MAKER	1
30" COFFEE SYSTEM	1
30" STEAM OVEN	1
30" MICROWAVE OVEN	1
30" INTEGRATED WINE STORE	1
SINK	1
24" DISHWASHER	2



The dimensions stated for this unit floor plan are approximate because there are various recognized methods for calculating the square footage of a unit. The square footage stated here is calculated from the exterior boundaries of the exterior walls to the centerline of interior demising walls without deductions for cutouts, curves, or architectural features. This method typically results in quoted dimensions greater than the dimensions that would be determined by using other accepted methods. The definition of "Unit" and the calculation method to be relied upon is set forth by the Developer in Developer's prospectus and the method set forth in the Developer's prospectus may result in a square footage calculation less than the method used here. Consult the Developer's prospectus to learn Unit dimensions and what is offered with the Unit. Dimensions and unit configuration is not guaranteed and may change during construction. Depictions of furnishings, fixtures and other items of personal property are not included with purchase.



Kitchen Finishes

SCHEME A



MATERIAL SCHEME

01. WARM WHITE OAK TIMBER FLOORING | 02. BRECCIA CAPRAIA COUNTERTOP AND ISLAND STONE
03. CLEAR GLASS TO HIGH CUPBOARD | 04. DETAILS METAL FINISH | 05. SANITARYWARE FINISH

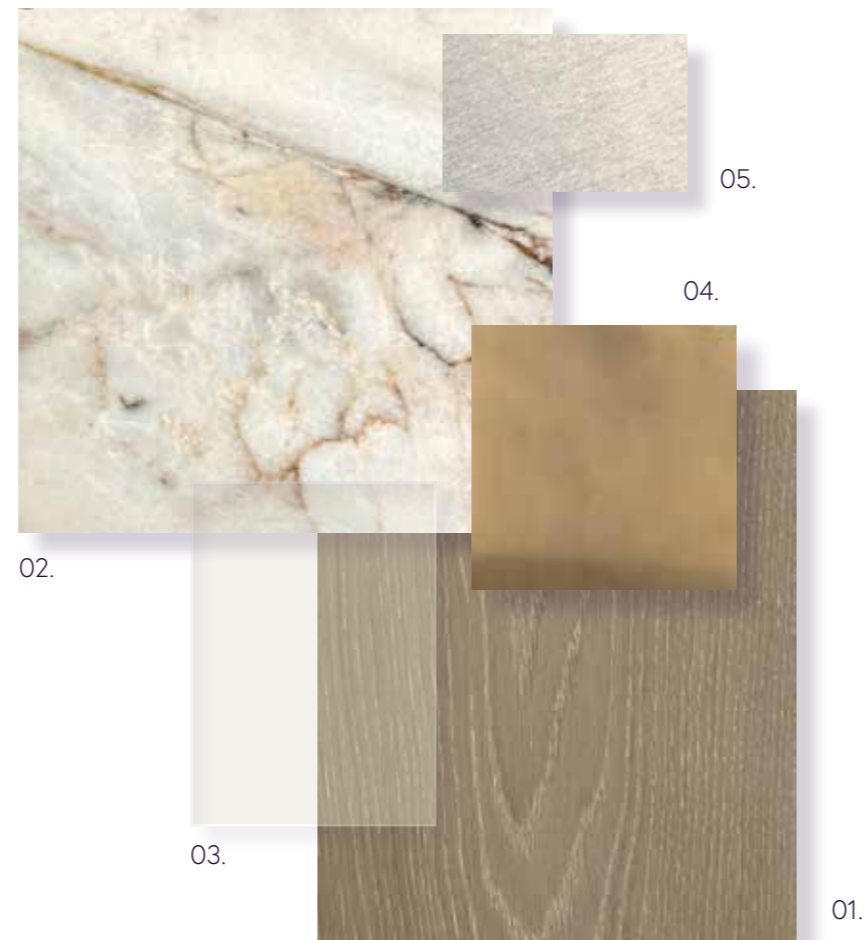
N 25° 45.8255



W 80° 8.4428

Kitchen Finishes

SCHEME B



MATERIAL SCHEME

01. SMOKED OAK FLOORING | 02. TARAHUMARA COUNTERTOP AND ISLAND STONE
03. CLEAR GLASS TO HIGH CUPBOARD | 04. DETAILS METAL FINISH | 05. SANITARYWARE FINISH

N 25° 45.8255



W 80° 8.4428

Kitchen Equipment & Fittings



MILLWORK DETAIL CONCEPT



SUBZERO
15" Ice Maker



COVE
24" Cove Dishwasher



SUBZERO
36" Designer Column
Freezer



SUBZERO
36" Designer Column
Refrigerator



SUBZERO
30" Wine Storage



WOLF
48" Dual Fuel Range



WOLF
30" Coffee System



WOLF
30" Black Glass Convection
Steam Oven



WOLF
30" Drop-down Door
Microwave Oven



48" Low Profile Wall Hood

Kitchen Equipment & Fittings



DORNBRAUCH
Tara Classic Hot & Cold
Water Dispenser



DORNBRAUCH
Tara Ultra Single Lever
Mixer with Pull-down Spray



DORNBRAUCH
Pot Filler



Kitchen Sink



Cabinet Pull



Concealed Equipment Joinery Pull



Drawer Pull

FINISHES



Platinum Matte



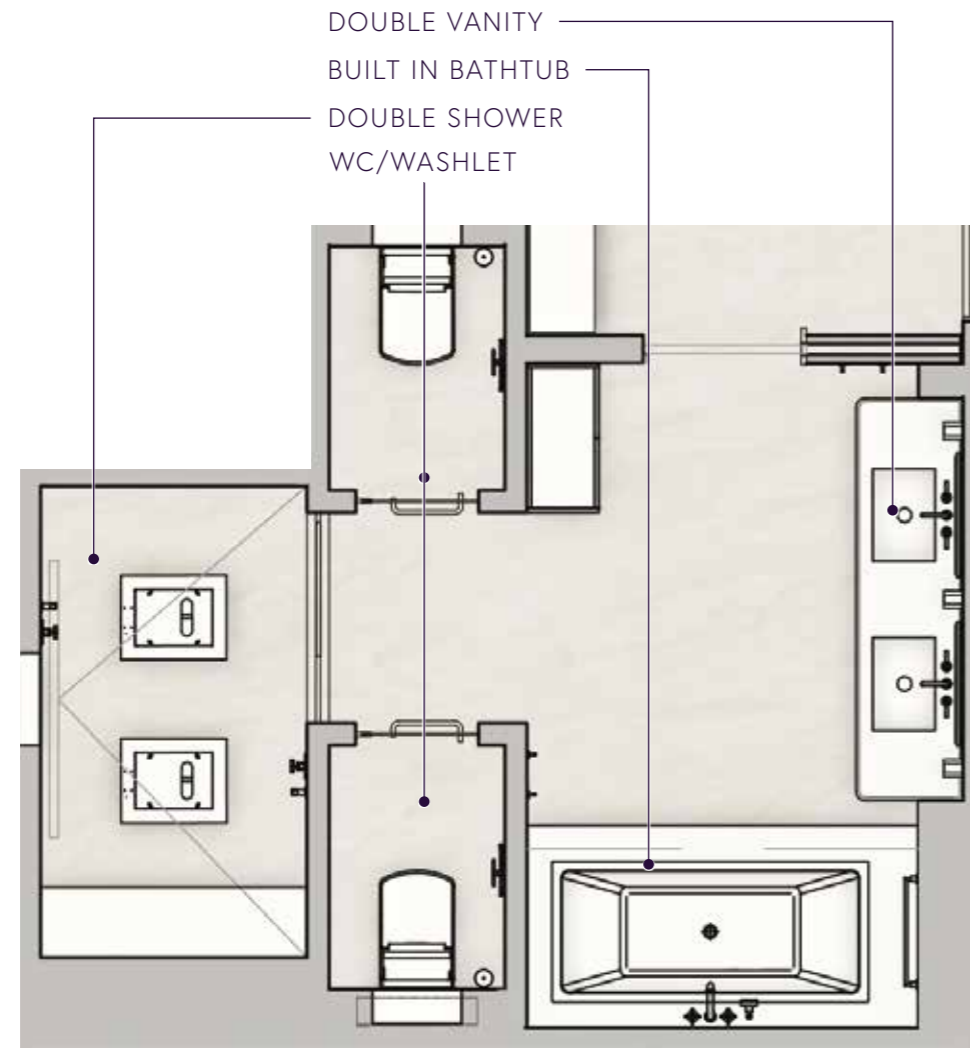
ARTIST'S CONCEPTUAL RENDERING

N 25° 45.8255



W 80° 8.4428

Primary Bathroom — Layout & Finishes



MATERIAL SCHEME

01. TAJ MAJAL STONE AT FLOOR, WALLS AND VANITY | 02A & 02B. TIMBER AT VANITY OPTIONS
 03. SATIN OPAL GLASS AT WC DOOR 04. MIRROR | 05. SANITARYWARE FINISH

The dimensions stated for this unit floor plan are approximate because there are various recognized methods for calculating the square footage of a unit. The square footage stated here is calculated from the exterior boundaries of the exterior walls to the centerline of interior demising walls without deductions for cutouts, curves, or architectural features. This method typically results in quoted dimensions greater than the dimensions that would be determined by using other accepted methods. The definition of "Unit" and the calculation method to be relied upon is set forth by the Developer in Developer's prospectus and the method set forth in the Developer's prospectus may result in a square footage calculation less than the method used here. Consult the Developer's prospectus to learn Unit dimensions and what is offered with the Unit. Dimensions and unit configuration is not guaranteed and may change during construction. Depictions of furnishings, fixtures and other items of personal property are not included with purchase.



Primary Bathroom — Sanitaryware Selections

DORNBRACHT — TARA



DORNBRACHT
Tara Deck Mounted Faucet



DORNBRACHT
Rain Panel



DORNBRACHT
Tara Robe Hooks



TOTO
Washlet Toilet



Concept Image



Steam Shower with
Water Jets



CUSTOM
Stone Sink



DORNBRACHT
Hand Shower Set



DORNBRACHT
Thermostat Module



Soaking Bathtub



Wall Sconce



DORNBRACHT
Tara Towel Bar



DORNBRACHT
Tara Toilet Roll Holder

FINISHES



Dark Brushed
Brass

Secondary Bathroom Mood & Palette



MATERIAL SCHEME

01A & 01B. TIMBER AT VANITY WALL OPTIONS | 02. CALCATTA APUANO STONE AT VANITY TOP
 03. CORSICA CREAM STONE AT FLOOR AND WALLS | 04. CLEAR GLASS TO SHOWER PARTITION
 05. MIRROR | 06. SANITARYWARE FINISH



Secondary Bathroom — Sanitaryware Selections

DORNBRACHT — TARA



DORNBRACHT
Rain Shower



DORNBRACHT
Tara Deck Mounting Faucet



TOTO
One-Piece Toilet



DORNBRACHT
Thermostat Module



DORNBRACHT
Hand Shower Set



DURAVIT
Undermount Sink



DORNBRACHT
Tara Toilet Roll Holder



Wall Sconce



DORNBRACHT
Tara Robe Hooks



DORNBRACHT
Tara Towel Bar

FINISHES



Dark Platinum
Matte



Powder Room Mood & Palette



MATERIAL SCHEME

01. CORSICA CREAM STONE FLOOR AND DADO HEIGHT WALL | 02. CRISTALLO TROPICALE STONE VANITY
03. WALL PAINT | 04.MIRROR | 05. SANITARYWARE FINISH



Powder Room — Sanitaryware Selections

DORNBRACHT — TARA



DORNBRACHT
Tara Faucet



TOTO
One-Piece Toilet



DORNBRACHT
Tara Robe Hooks



Wall Light



DORNBRACHT
Tara Toilet Roll Holder



DORNBRACHT
Tara Towel Bar

FINISHES



Dark Platinum
Matte



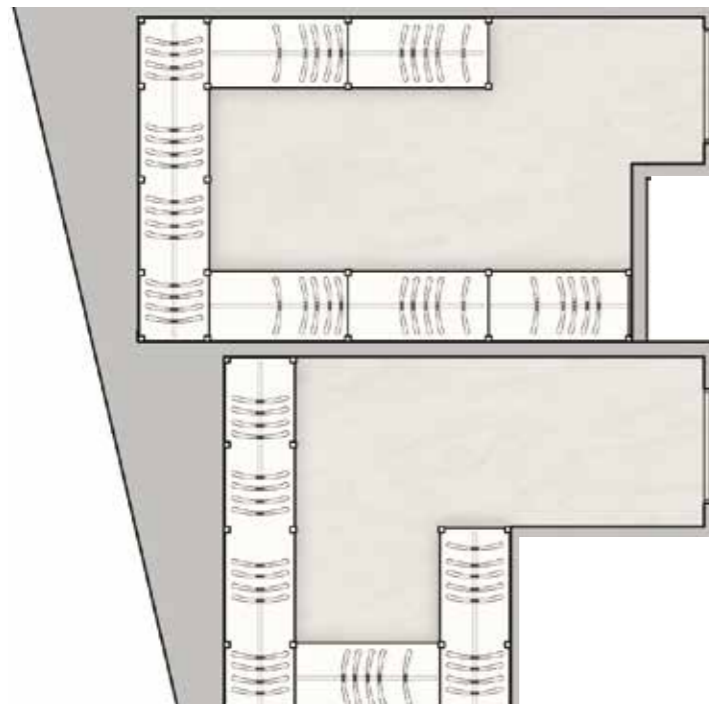
ARTIST'S CONCEPTUAL RENDERING

N 25° 45.8255



W 80° 8.4428

Primary Wardrobe Layout, Finishes & Hardware Selection



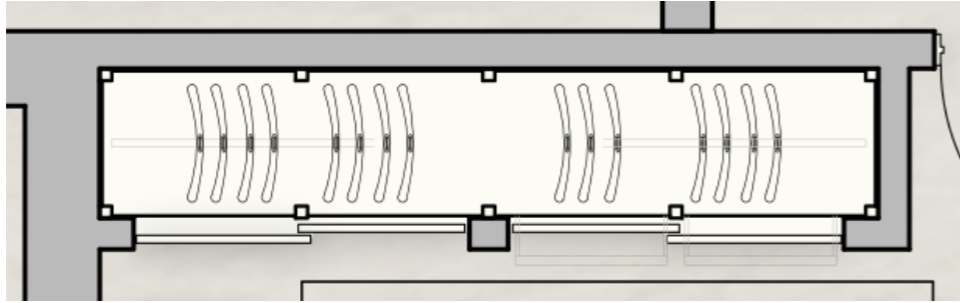
MATERIAL SCHEME

01. PAINT AT WALLS AND CEILING | 02A & 02B. TIMBER MILLWORK OPTIONS
 03. LINEAR TEXTURED GLASS TO ENTRY DOORS | 04. LINEN PANNELLING | 05. TINTED DOOR GLASS
 06. DOLCE VITA STONE ACCENTS | 07. METAL DETAILS | 08. LEATHER DETAILS

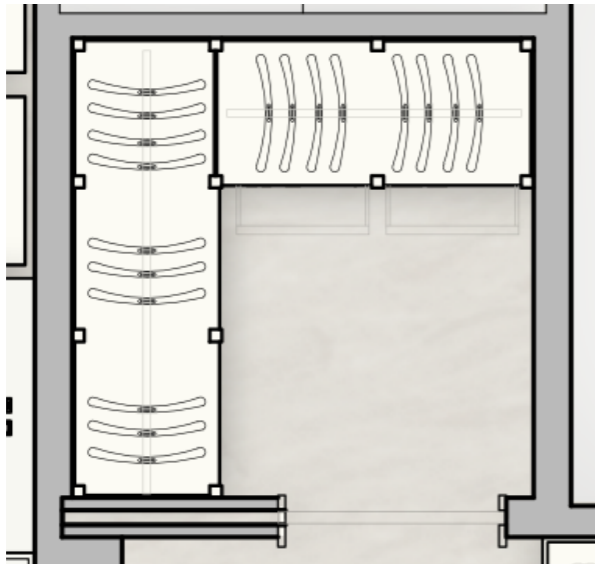
The dimensions stated for this unit floor plan are approximate because there are various recognized methods for calculating the square footage of a unit. The square footage stated here is calculated from the exterior boundaries of the exterior walls to the centerline of interior demising walls without deductions for cutouts, curves, or architectural features. This method typically results in quoted dimensions greater than the dimensions that would be determined by using other accepted methods. The definition of "Unit" and the calculation method to be relied upon is set forth by the Developer in Developer's prospectus and the method set forth in the Developer's prospectus may result in a square footage calculation less than the method used here. Consult the Developer's prospectus to learn Unit dimensions and what is offered with the Unit. Dimensions and unit configuration is not guaranteed and may change during construction. Depictions of furnishings, fixtures and other items of personal property are not included with purchase.



Secondary Wardrobe — Layouts & Mood



TYPE 1 - ENCLOSED WARDROBE



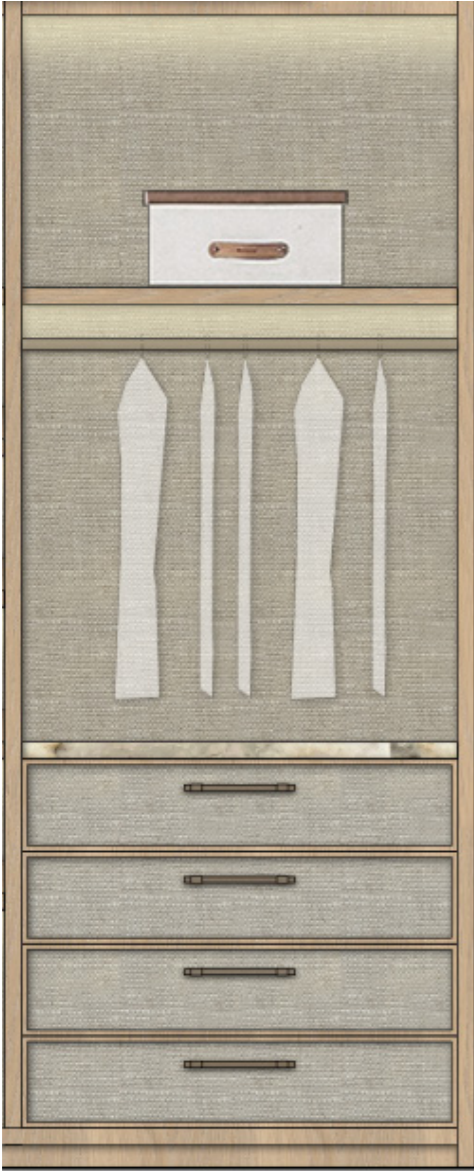
TYPE 2 - WALK-IN WARDROBE



The dimensions stated for this unit floor plan are approximate because there are various recognized methods for calculating the square footage of a unit. The square footage stated here is calculated from the exterior boundaries of the exterior walls to the centerline of interior demising walls without deductions for cutouts, curves, or architectural features. This method typically results in quoted dimensions greater than the dimensions that would be determined by using other accepted methods. The definition of "Unit" and the calculation method to be relied upon is set forth by the Developer in Developer's prospectus and the method set forth in the Developer's prospectus may result in a square footage calculation less than the method used here. Consult the Developer's prospectus to learn Unit dimensions and what is offered with the Unit. Dimensions and unit configuration is not guaranteed and may change during construction. Depictions of furnishings, fixtures and other items of personal property are not included with purchase.



Primary Wardrobe — Module Types



SHORT HAND & DRESSER

TOP STORAGE
DRAWERS X 4
SHORT HANGING



VANITY

TOP STORAGE
DRY VANITY WITH JEWELLERY DRAWERS



ENCLOSED DISPLAY SHELVES

ENCLOSED DOOR
TOP STORAGE
HAND BAG DISPLAY
ACCESSORIES DRAWERS
BOTTOM DRAWER



ENCLOSED LONG HANG

ENCLOSED DOOR
TOP STORAGE
LONG HANGING
BOTTOM DRAWER



Primary Wardrobe — Module Types



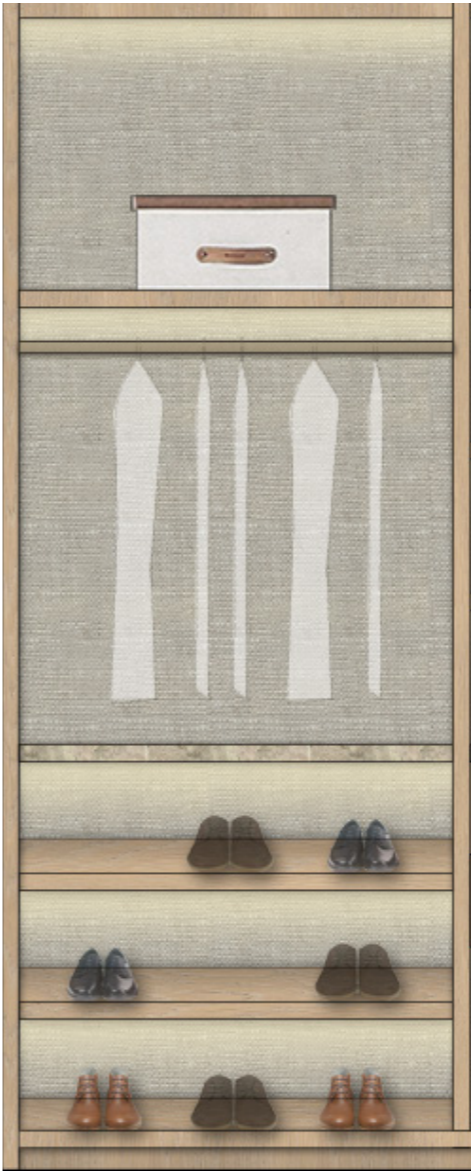
DOUBLE SHORT HANG

- TOP STORAGE
- SHORT HANGING
- ACCESSORIES DRAWER
- TROUSERS/SKIRT PULL
- OUT HANGER



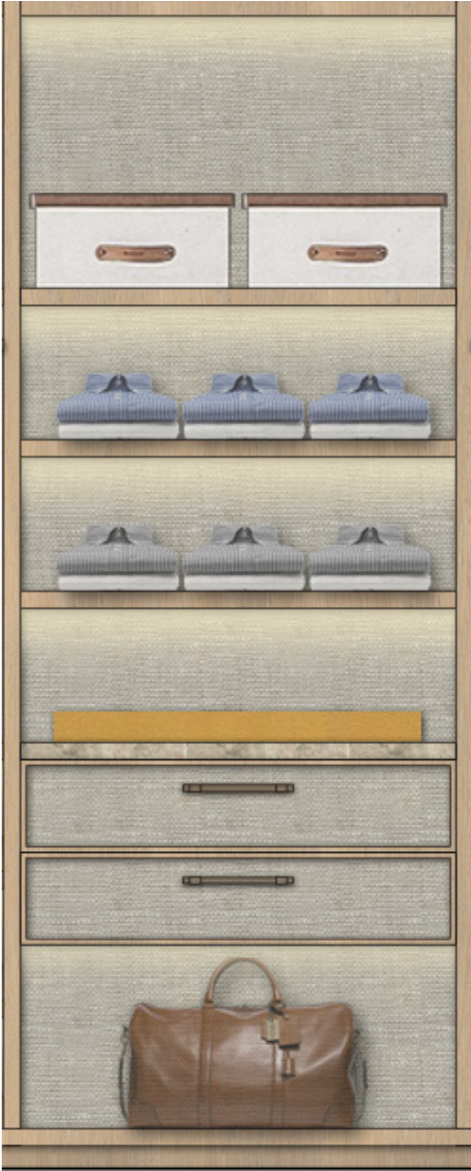
SHOE DISPLAY

- TOP STORAGE
- SHOES RACK
- BOTTOM STORAGE



SHOE DISPLAY & SHORT HANG

- TOP STORAGE
- SHORT HANGING
- SHOES RACK



OPEN SHELVES & DRESSER

- CLOTHES SHELVES
- DRAWERS X 2
- BOTTOM STORAGE



Midnight Bar — Mood & Finishes



MIDNIGHT BAR MATERIALS
WILL FOLLOW KITCHEN SELECTION



MATERIAL SCHEME

01A & 01B. TIMBER MILLWORK OPTIONS
02A & 02B. BRECCIA CAPRAIA STONE OR TARAHUMARA COUNTER & DETAILS | 03.METAL DETAILING
04. SANITARYWARE FINISH



Midnight Bar — Layout & Elevations



DORNBRACHT
Tara Deck Mounted
Kitchen Faucet



Bar Sink



Fridge Drawer

Ironmongery Selections



Door Lever



Door Pull Handle



Door Pull Handle



Privacy Turn

CABINETY HARDWARE



Solid Brass
Cabinett Pull

FINISHES



Mid Antique
Brass Waxed


THE RESIDENCES

SIX FISHER ISLAND

6

ORAL REPRESENTATIONS CANNOT BE RELIED UPON AS CORRECTLY STATING REPRESENTATIONS OF THE DEVELOPER. FOR CORRECT REPRESENTATIONS, MAKE REFERENCE TO THIS BROCHURE AND TO THE DOCUMENTS REQUIRED BY SECTION 718.503, FLORIDA STATUTES, TO BE FURNISHED BY A DEVELOPER TO A BUYER OR LESSEE.

New York Residents: THE COMPLETE OFFERING TERMS ARE FOUND IN A CPS-12 APPLICATION AVAILABLE FROM THE OFFEROR. FILE NO. CP23-0006. WARNING: THE CALIFORNIA DEPARTMENT OF REAL ESTATE HAS NOT INSPECTED, EXAMINED, OR QUALIFIED THIS OFFERING. THIS CONDOMINIUM HAS ALSO BEEN REGISTERED WITH THE MASSACHUSETTS BOARD OF REGISTRATION OF REAL ESTATE BROKERS AND SALESPERSONS F-1279-01-01.

 Six Fisher Island Condominium (the "Condominium") is marketed as The Residences Six Fisher Island and is developed by PRH Parcel 7 Owner, LLC ("Developer" and or "Offeror"), which uses the marks of The Related Group, BH Group, and of Fisher Island under license agreements; however, neither The Related Group, BH Group, nor Fisher Island is the Developer. All owners of a home in the Condominium approved to become lifetime members in the Fisher Island Club (the "Club") are granted a lifetime Club membership upon the closing of the Condominium home purchase subject to the owner meeting and maintaining all eligibility requirements. The Club determines eligibility for membership and the Developer has no control over the Club's eligibility requirements. The annual dues and or assessments required for Club membership shall be the member's cost and is not paid by Developer. The Club membership cannot be redeemed for cash or other goods, services, or materials. This is not intended to be an offer to sell, or solicitation of an offer to buy, a condominium unit to residents of any jurisdiction were prohibited by law. There is no guarantee that the any proposed Condominium amenities, artwork, designers, contributing artists, interior designers, fitness facilities, or restaurants will be available as depicted or at all upon, or following, the completion of the Condominium. Consult the Prospectus of Developer to understand the amenities, proposed budget, terms, conditions, specifications, fees, Unit dimensions, site plans, about Fisher Island, and to learn what is included with purchase and by payment of regular condominium assessments. The project graphics, renderings, photographs, and text provided herein are copyrighted works owned by the respective developer unless otherwise credited. 2023 © PRH Parcel 7 Owner, LLC, with all rights reserved.