

RESIDENCE 06

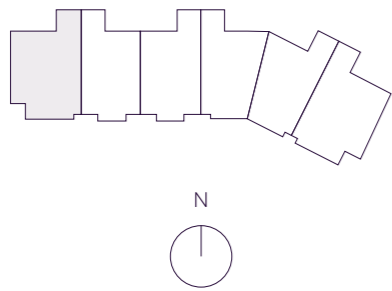
INTERIOR EXTERIOR
 5,058 F² 1,065 F²
 470 M² 98 M²

TOTAL
 6,123 F²
 568 M²

*

- 4 BEDROOMS
- 5 BATHROOMS
- 1 POWDER ROOM
- FAMILY ROOM
- WINDOWED SERVICE SUITE

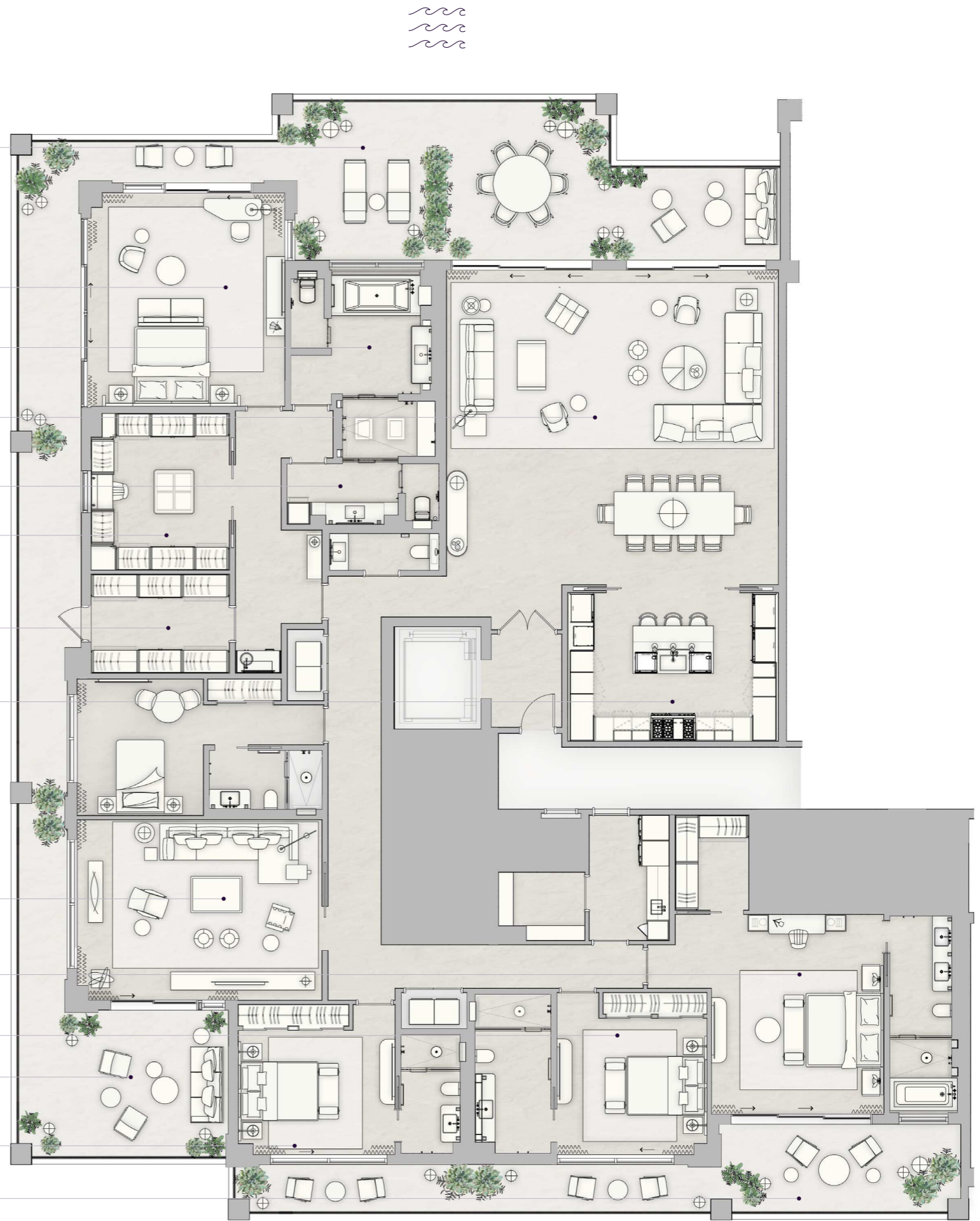
OCEAN VIEW



THE RESIDENCES
 SIX FISHER ISLAND
 ⑥

The dimensions stated for this unit floor plan are approximate because there are various recognized methods for calculating the square footage of a unit. The square footage stated here is calculated from the exterior boundaries of the exterior walls to the centerline of interior demising walls without deductions for cutouts, curves, or architectural features. This method typically results in quoted dimensions greater than the dimensions that would be determined by using other accepted methods. The definition of "line" and the calculation method to be relied upon is set forth by the Developer in Developer's prospectus and the method set forth in the Developer's prospectus may result in a square footage calculation less than the method used here. Consult the Developer's prospectus to learn Unit dimensions and what is offered with the Unit. Dimensions and unit configuration is not guaranteed and may change during construction. Depictions of furnishings, fixtures and other items of personal property are not included with purchase.

- BALCONY
15'-3" x 69'-5"
- PRIMARY BEDROOM
20'-3" x 17'-7"
- HER BATHROOM
17'-1" x 13'-3"
- LIVING ROOM
29'-2" x 30'-6"
- HIS BATHROOM
12'-1" x 13'-3"
- HER WARDROBE
14'-1" x 12'-5"
- HIS WARDROBE
8'-10" x 12'-5"
- KITCHEN
13'-6" x 19'-6"
- FAMILY ROOM
17'-0" x 22'-0"
- BEDROOM 2
18'-3" x 15'
- BEDROOM 3
12'-6" x 14'
- BALCONY
8'-6" x 13'-7"
- BEDROOM 4
11'-1" x 14'-8"
- BALCONY
8'-6" x 21'-0"



N 25° 45.8255



W 80° 8.4428