

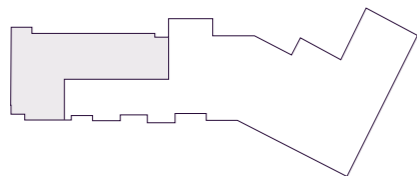
VILLA 01

INTERIOR
8,835 SF

EXTERIOR
21,475 SF

*

- 5 BEDROOMS
- 7.5 BATHROOMS
- PRIVATE BAYFRONT YARD
- SUMMER KITCHEN
- FAMILY ROOM
- WINE ROOM
- STUDY
- FITNESS STUDIO
- PRIVATE GARAGE
- SERVICE SUITE

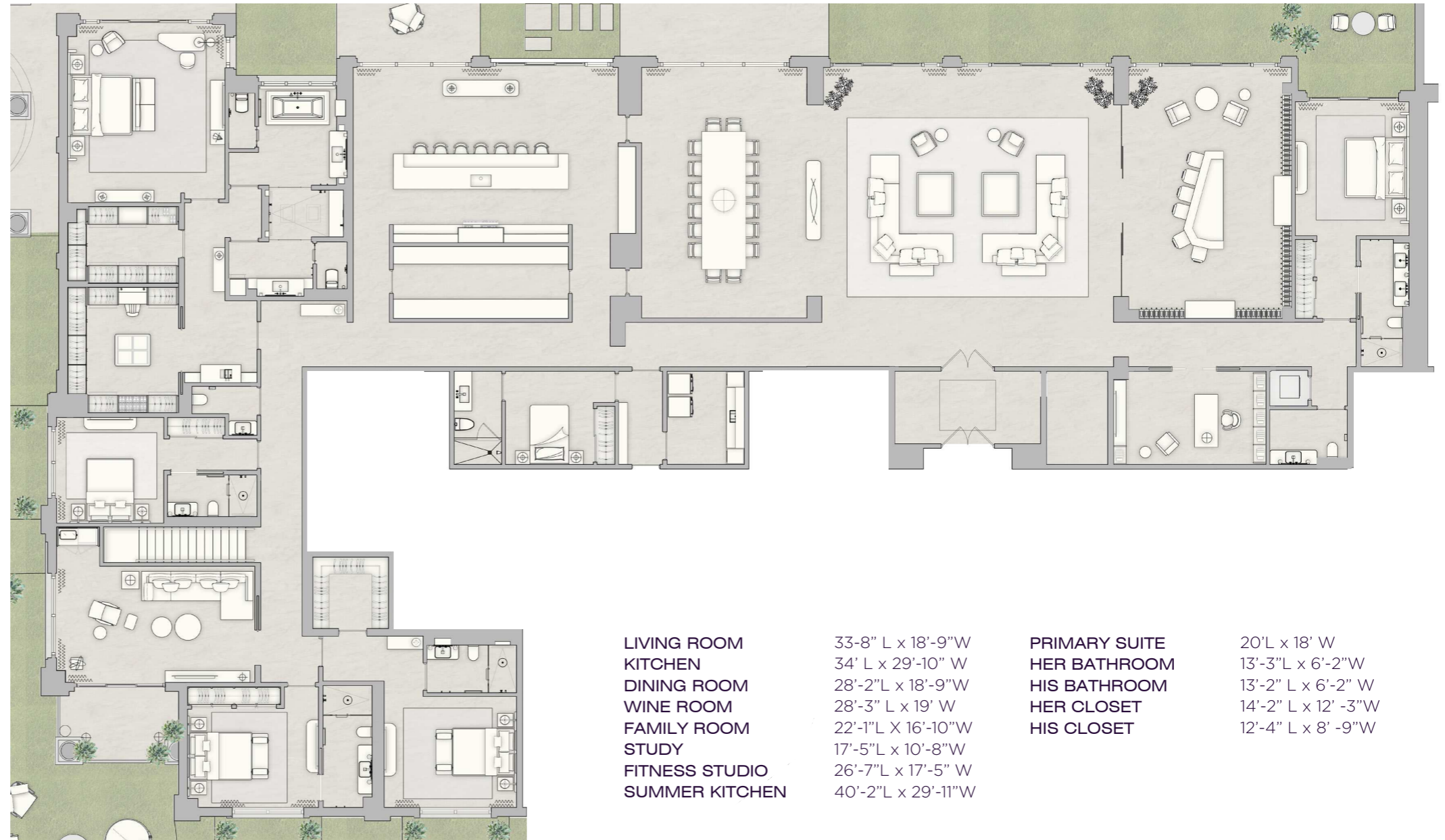


THE RESIDENCES

SIX FISHER ISLAND

⑥

The dimensions stated for this unit floor plan are approximate because there are various recognized methods for calculating the square footage of a unit. The square footage stated here is calculated from the exterior boundaries of the exterior walls to the centerline of interior demising walls without deductions for cutouts, curves, or architectural features. This method typically results in quoted dimensions greater than the dimensions that would be determined by using other accepted methods. The definition of "line" and the calculation method to be relied upon is set forth by the Developer in Developer's prospectus and the method set forth in the Developer's prospectus may result in a square footage calculation less than the method used here. Consult the Developer's prospectus to learn Unit dimensions and what is offered with the Unit. Dimensions and unit configuration is not guaranteed and may change during construction. Depictions of furnishings, fixtures and other items of personal property are not included with purchase.



LIVING ROOM 33'-8" L x 18'-9" W
 KITCHEN 34' L x 29'-10" W
 DINING ROOM 28'-2" L x 18'-9" W
 WINE ROOM 28'-3" L x 19' W
 FAMILY ROOM 22'-1" L x 16'-10" W
 STUDY 17'-5" L x 10'-8" W
 FITNESS STUDIO 26'-7" L x 17'-5" W
 SUMMER KITCHEN 40'-2" L x 29'-11" W

PRIMARY SUITE 20' L x 18' W
 HER BATHROOM 13'-3" L x 6'-2" W
 HIS BATHROOM 13'-2" L x 6'-2" W
 HER CLOSET 14'-2" L x 12' -3" W
 HIS CLOSET 12'-4" L x 8' -9" W

N 25° 45.8255



W 80° 8.4428