

RESIDENCE 04C

INTERIOR 7,744 F²
719 M²

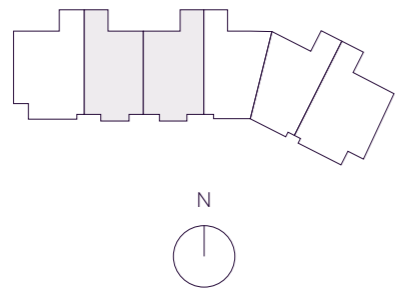
EXTERIOR 1,050 F²
97 M²

TOTAL 8,794 F²
816 M²

*

- 5 BEDROOMS
- 6 BATHROOMS
- 2 POWDER ROOMS
- FAMILY ROOM
- SERVICE SUITE
- WINE ROOM
- EXERCISE ROOM
- DEN

OCEAN VIEW

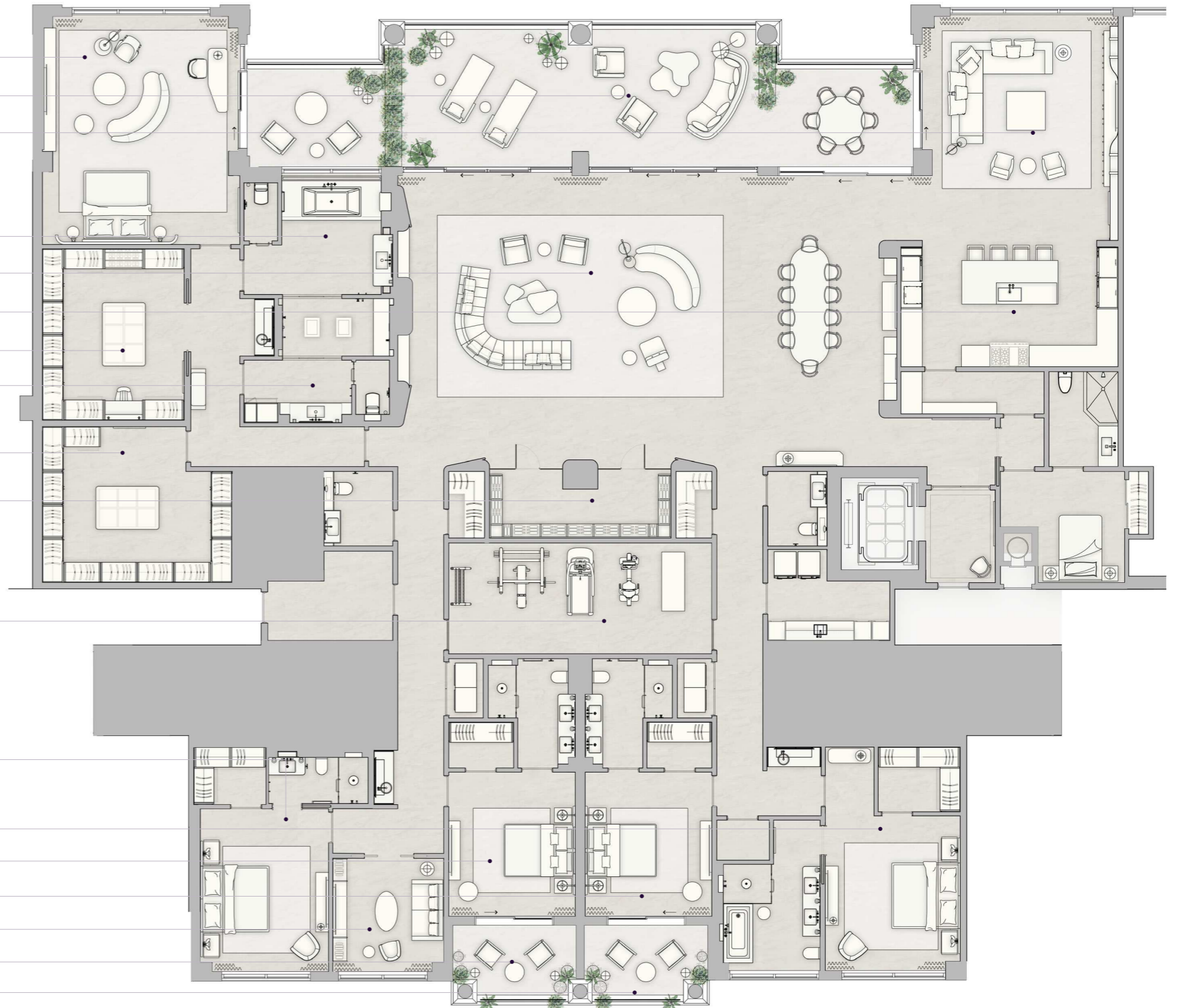


THE RESIDENCES

SIX FISHER ISLAND

⑥

- PRIMARY BEDROOM 23'-1" x 19'-4"
- BALCONY 15' x 67'-11"
- FAMILY ROOM 22'-8" x 19'
- HER BATHROOM 18'-5" x 15'-1"
- GREAT ROOM 29'-7" x 50'-7"
- KITCHEN 12'-10" x 17'-8"
- HER WARDROBE 17'-5" x 14'-4"
- HIS BATHROOM 12'-6" x 14'-9"
- HIS WARDROBE 14'-10" x 19'-8"
- WINE ROOM 6'-3" x 14'-5"
- EXERCISE ROOM 12'-3" x 26'-8"
- BEDROOM 2 16'-1" x 13'-8"
- BEDROOM 3 14'-8" x 12'-10"
- BEDROOM 4 14'-8" x 12'-10"
- BEDROOM 5 16'-9" x 13'
- DEN 11'-9" x 11'-3"
- BALCONY 8'-6" x 12'-4"
- BALCONY 8'-6" x 12'-4"



The dimensions stated for this unit floor plan are approximate because there are various recognized methods for calculating the square footage of a unit. The square footage stated here is calculated from the exterior boundaries of the exterior walls to the centerline of interior demising walls without deductions for cutouts, curves, or architectural features. This method typically results in quoted dimensions greater than the dimensions that would be determined by using other accepted methods. The definition of "Unit" and the calculation method to be relied upon is set forth by the Developer in Developer's prospectus and the method set forth in the Developer's prospectus may result in a square footage calculation less than the method used here. Consult the Developer's prospectus to learn Unit dimensions and what is offered with the Unit. Dimensions and unit configuration is not guaranteed and may change during construction. Depictions of furnishings, fixtures and other items of personal property are not included with purchase.

N 25° 45.8255



*

W 80° 8.4428