

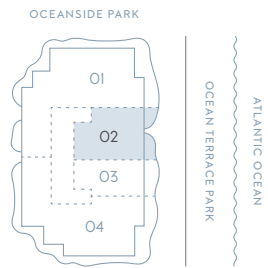
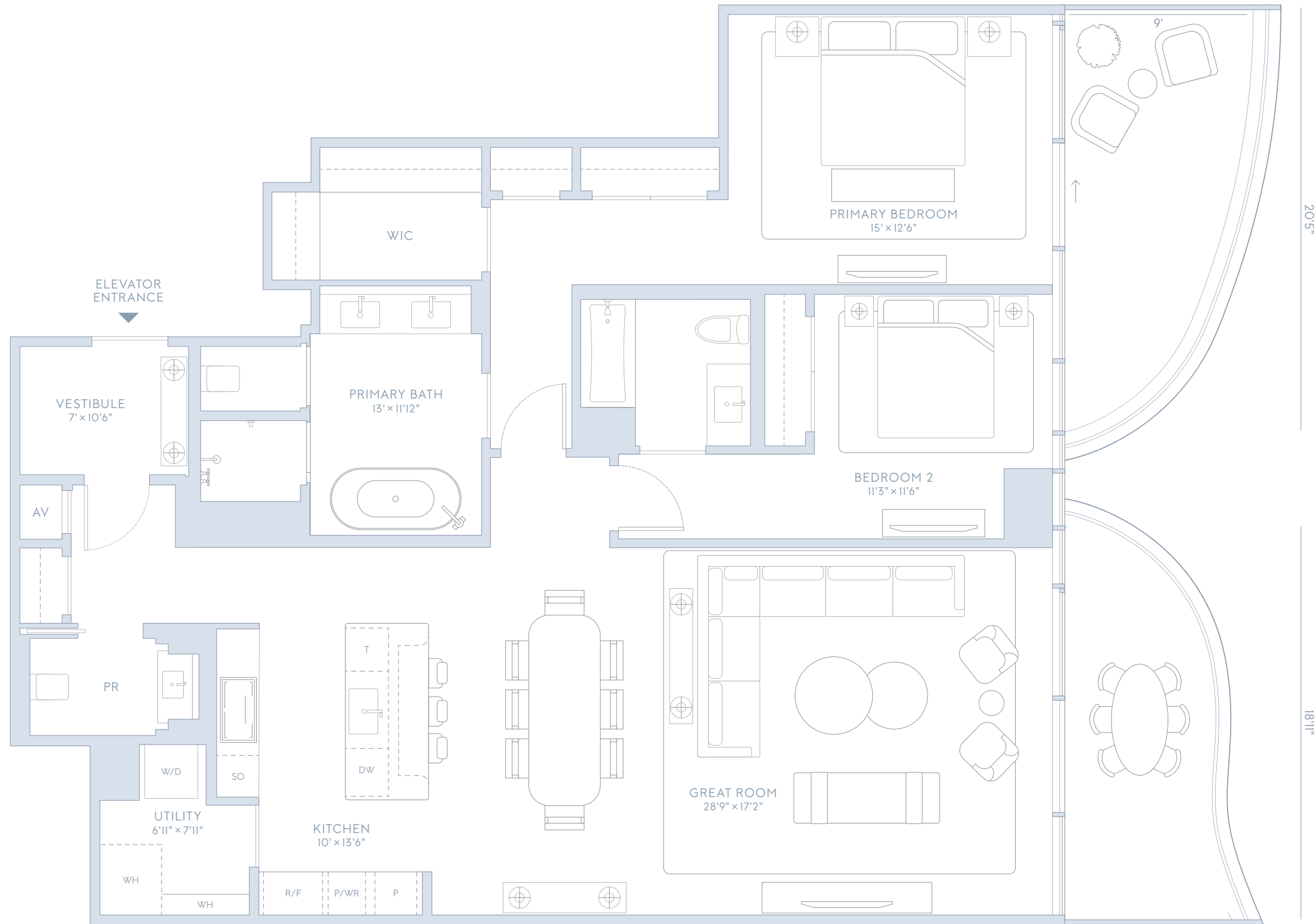
# 602-1102

2 Bedrooms  
2.5 Bathrooms

**INTERIOR**  
1,781 square feet  
165 square meters

**EXTERIOR**  
220 square feet  
20 square meters

**TOTAL**  
2,001 square feet  
185 square meters



**OCEAN TERRACE**  
RESIDENCES

DEVELOPED BY  
**Witkoff**

DEVELOPED BY  
**WITKOFF PARTNERS**

INTERIORS BY  
**RAMSA**

ARCHITECTURE BY  
**revuelta**

LANDSCAPE  
ARCHITECTURE BY  
**enea**



ORAL REPRESENTATIONS CANNOT BE RELIED UPON AS CORRECTLY STATING THE REPRESENTATIONS OF THE DEVELOPER. FOR CORRECT REPRESENTATIONS, MAKE REFERENCE TO THE DOCUMENTS REQUIRED BY SECTION 718.503, FLORIDA STATUTES, TO BE FURNISHED BY A DEVELOPER TO A BUYER OR LESSEE. THIS CONDOMINIUM IS BEING DEVELOPED BY OCEAN TERRACE RESIDENTIAL LLC, A DELAWARE LIMITED LIABILITY COMPANY ("DEVELOPER"). NEITHER WITKOFF NOR OCEAN TERRACE HOLDINGS ARE THE DEVELOPER. THIS OFFERING IS MADE ONLY BY THE PROSPECTUS (OFFERING CIRCULAR) FOR THE CONDOMINIUM AND NO STATEMENT SHOULD BE RELIED UPON IF NOT MADE IN THE PROSPECTUS. THIS IS NOT INTENDED TO BE AN OFFER TO SELL, NOR A SOLICITATION OF OFFERS TO BUY IN ANY JURISDICTION WHERE PROHIBITED BY LAW, AND YOUR ELIGIBILITY FOR PURCHASE WILL DEPEND UPON YOUR STATE OF RESIDENCY. ALL PLANS, FEATURES AND AMENITIES DEPICTED HEREIN ARE BASED UPON PRELIMINARY DEVELOPMENT PLANS AND ARE SUBJECT TO CHANGE WITHOUT NOTICE IN THE MANNER PROVIDED IN THE OFFERING DOCUMENTS. ALL RESIDENCE FEATURES AND FINISHES AND BUILDING AMENITIES ARE SUBJECT TO CHANGE, INCLUDING, WITHOUT LIMITATION, CHANGES IN MANUFACTURERS, BRANDS, AMENITIES, SERVICES AND/OR THE DESIGN TEAM. CERTAIN UNITS IN THE CONDOMINIUM MAY HAVE DIFFERENT RESIDENCE FEATURES. CONSULT THE PROSPECTUS AND YOUR PURCHASE AGREEMENT FOR DETAILS REGARDING THE ITEMS INCLUDED WITH YOUR UNIT OR THE TOWER IN WHICH YOUR UNIT IS LOCATED. PLANS, FEATURES AND AMENITIES DESCRIBED HEREIN MAY BE PROVIDED AT AN ADDITIONAL COST. NO GUARANTEES OR REPRESENTATIONS WHATSOEVER ARE MADE THAT ANY PLANS, FEATURES, AMENITIES OR FACILITIES WILL BE PROVIDED OR, IF PROVIDED, WILL BE OF THE SAME TYPE, SIZE, LOCATION OR NATURE AS DEPICTED OR DESCRIBED HEREIN. THE CONDOMINIUM VIEWS WILL VARY DEPENDING ON THE UNIT PURCHASED. NO VIEW IS GUARANTEED. NO GUARANTEE OR REPRESENTATIONS WHATSOEVER ARE MADE THAT EXISTING OR FUTURE VIEWS OF THE PROJECT AND SURROUNDING AREAS DEPICTED BY ARTIST'S CONCEPTUAL RENDERINGS OR OTHERWISE DESCRIBED HEREIN WILL BE PROVIDED, OR IF PROVIDED, WILL BE AS DEPICTED OR DESCRIBED HEREIN. ADDITIONALLY, CEILING HEIGHTS ARE MEASURED FROM TOP OF SLAB TO TOP OF SLAB AND EXCLUDE AREAS WHERE ANY SOFFITS, MOLDINGS, DROP AND/OR SUSPENDED CEILINGS AND/OR LIGHT FIXTURES MAY BE INSTALLED. AS SUCH, THE REFERENCED CEILING HEIGHT MAY NOT REPRESENT ACTUAL CEILING CLEARANCE. ALL STATED DIMENSIONS, SQUARE FOOTAGES AND SIZES ARE APPROXIMATE AND SUBJECT TO CHANGE. UNAUTHORIZED REPRODUCTION, DISPLAY OR OTHER DISSEMINATION OF SUCH MATERIALS IS STRICTLY PROHIBITED AND CONSTITUTES COPYRIGHT INFRINGEMENT. NO REAL ESTATE BROKER IS AUTHORIZED TO MAKE ANY REPRESENTATIONS OR OTHER STATEMENTS REGARDING THE PROJECTS, AND NO AGREEMENTS WITH, DEPOSITS PAID TO, OR OTHER ARRANGEMENTS MADE WITH ANY REAL ESTATE BROKER ARE OR SHALL BE BINDING ON THE DEVELOPER. THE CONDOMINIUM'S GRAPHICS, RENDERINGS AND TEXT PROVIDED HEREIN ARE COPYRIGHTED WORKS OWNED BY THE DEVELOPER. ALL RIGHTS RESERVED.